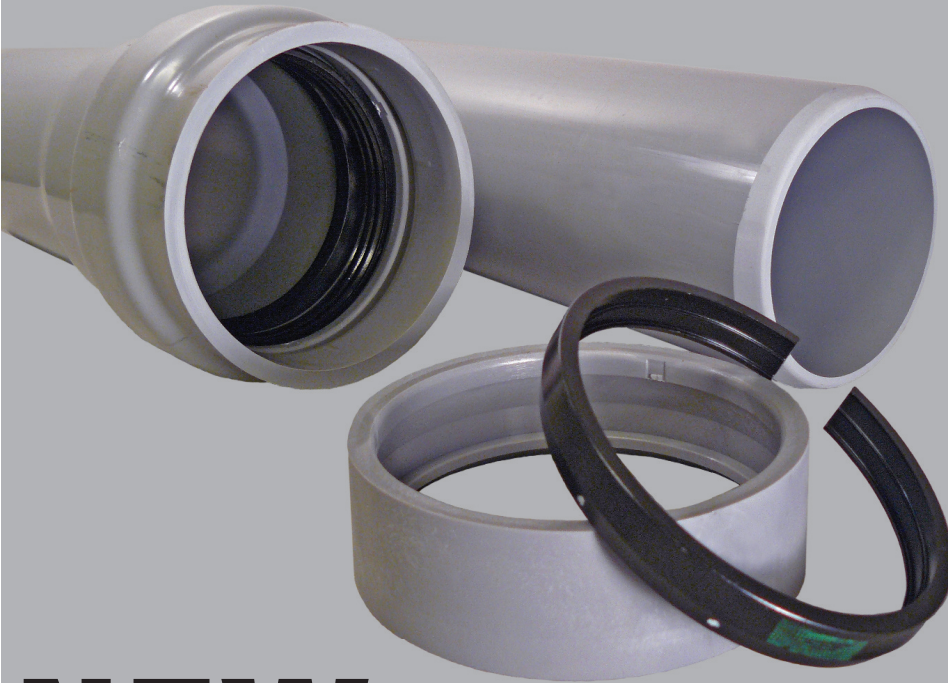


CAN>GRIP®

DIRECTIONAL DRILLING CONDUIT



NEW

INSTEAD...

The easy assembly method takes out the human error involved in the installation of external joint restraints. CAN>GRIP offers a quick joining method by simply pushing the spigot into the bell end of the adjoining pipe that is equipped with the new CAN>GRIP joint restraint. Once the pipe is installed, the gripper ring self engages the spigot thus locking the joint. The unique bell contains a gasket to maintain a watertight system.

NO TOOLS

NO CLAMPS OR BOLTS

NO REQUIRED ALIGNMENT GUIDES

NO EXTERNAL LOCKING MECHANISM

NO REDUCED I.D. DUE TO THE PIPE NECKING DOWN

Part Number	Trade Size	Length	Lay Length	Conduit O.D. (In.)	Conduit I.D. (In.)	Bell O.D. (In.)	Pack Qty.	Feet per Truckload	Wt. per 100 ft. (Lbs.)	Min. Bend Radius (ft.)	Insertion Force (Lbs.)	Seal Pressure Rating (psi)	Joined Pull Rating (Lbs.)	Typical Crush (Lbs. @ 30% deflection)	UL 651 / NEMA TC2 Min. Crush (Lbs)
A30EA42	4"	20'	19.5'	4.5"	4.0"	5.7"	520'	14,560'	234	65	70	75	14,000	1,075	900
A30GA42	6"	20'	19.5'	6.6"	6.0"	8.0"	400'	8,000'	456	65	100	75	18,000	950	850