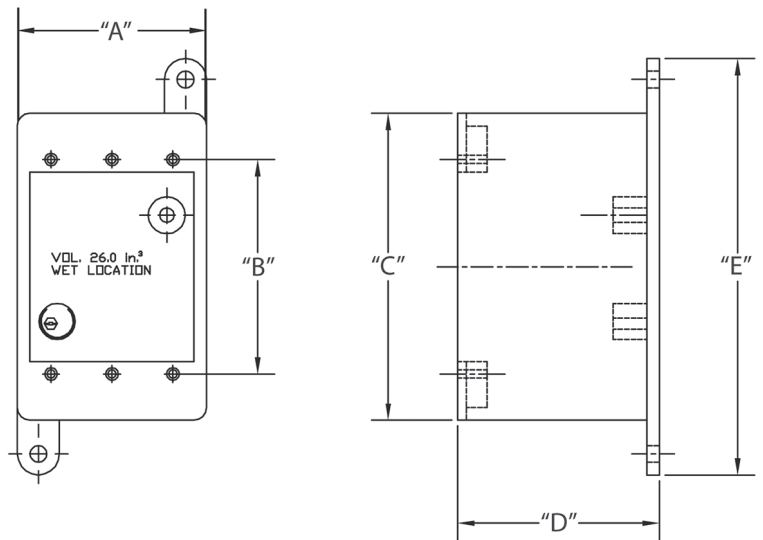
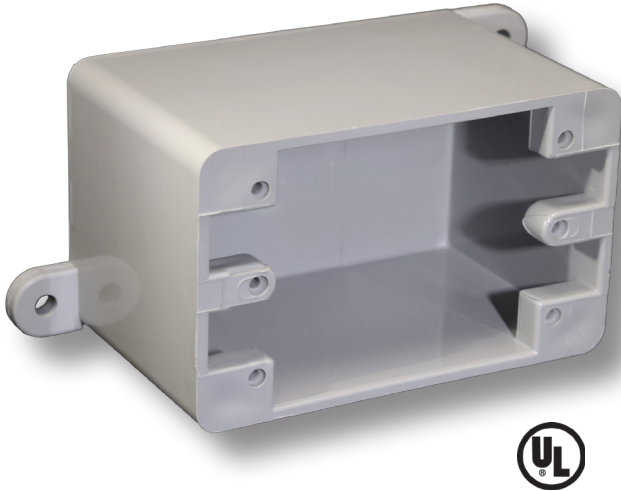


Type FD-Blank Single Gang Box

CANTEX 5133420 is a Type FD Blank Exposed Box. These 1-gang boxes are designed for use in indoor and outdoor locations where the boxes may be subject to environmental conditions.

- Type FD is designed to allow for a hub opening to be cut into the box depending on application
- 26.0 cu. in. surface mount box
- Durable non-conductive PVC will not rust or corrode
- Cover sold separately
- UL Listed



Part Number	Trade Size	Carton Quantity	"A"	"B"	"C"	"D"	"E"
5133420	--	10	2.813	3.313	4.563	3.000	6.125

Dimensions are nominal



SINGLE SOURCE FOR PVC ELECTRICAL

CANTEX offers a complete line of PVC Exposed Boxes as part of a full line PVC electrical products. The CANTEX Exposed Box line includes multiple sizes of Type FSC, Type FSE, Type FSS, Type FSCC, Type FDC, and Type FDE and Type FD-Blank Exposed Boxes. The line also includes Blank Single and Double Gang Covers as well as switch and toggle switch covers for Exposed Boxes.

With several decades of experience manufacturing PVC conduit, fittings and accessories, you can trust CANTEX to provide quality products. To see our complete line of PVC Conduit Bodies or our full line of PVC electrical products visit www.cantexinc.com.