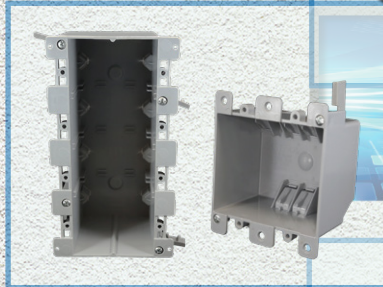
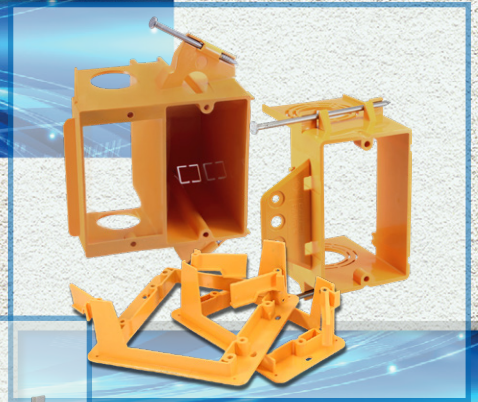


# CANTEX<sup>®</sup>

## EZ BOX<sup>®</sup> Line



**PVC Electrical  
Switch, Outlet  
& Ceiling Boxes**



**New Work Boxes**

**Old Work Boxes**

**Single Gang**

**Two, Three, & Four Gang**

**Vapor Boxes**

**Adjustable Boxes**

**Heavy Wall Boxes**

**Ceiling & Ceiling Fan Boxes**

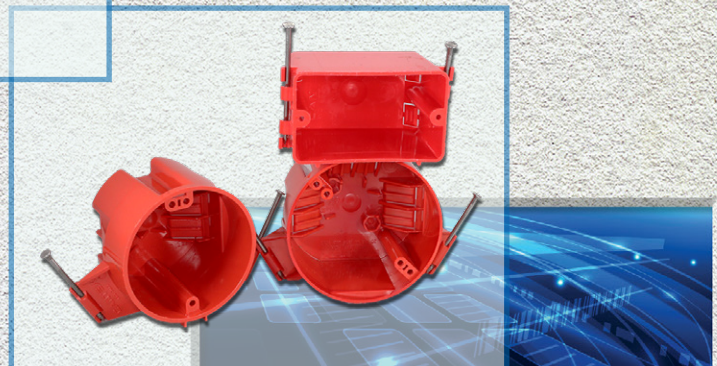
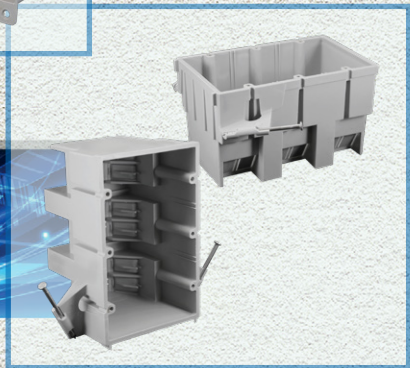
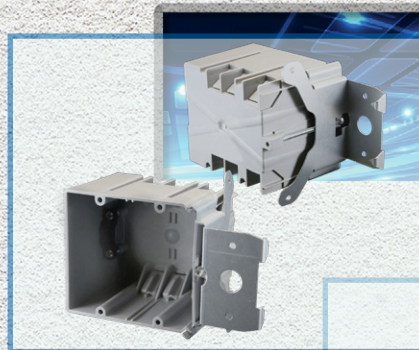
**Handy Wall Boxes**

**EZ BOX Low Voltage**

**Red Alarm Boxes**

**EZ BOX Accessories**

**ENT Boxes**



# Table of Contents

## EZ BOX® New Work Switch, Outlet, Ceiling & Ceiling Fan Boxes

New Work Box Overview.....	5
Single Gang New Work Switch & Outlet.....	6
Two, Three & Four Gang New Work /Switch & Outlet.....	7
New Work Flanged for Steel Stud Boxes.....	8
New Work 4" Square & Shallow Boxes.....	10
New Work Ceiling & Ceiling Fan Boxes.....	11



## EZ BOX® Old Work Switch, Outlet & Ceiling Boxes

Old Work Box Overview.....	14
Single Gang Old Work Switch & Outlet Boxes.....	15
Two, Three & Four Gang Old Work Switch & Outlet Boxes.....	15
Shallow and Low Voltage Old Work.....	16
Old Work Ceiling Boxes.....	17



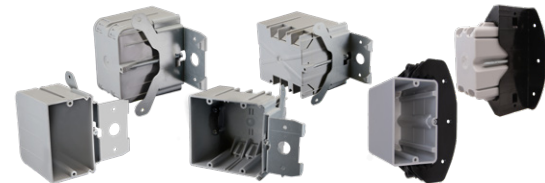
## EZ BOX® Heavy Wall Switch, Outlet & Ceiling Boxes

Heavy Wall Box Overview.....	18
Single, Two & Three Gang Heavy Wall Switch & Outlet Boxes.....	18
Four Gang Heavy Wall Switch & Outlet Boxes.....	19
Heavy Wall Ceiling Boxes.....	19



## EZ BOX® Adjustable Switch and Outlet Boxes

Adjustable Switch and Outlet Box Overview.....	21
Single & Two Gang Adjustable Switch and Outlet Boxes.....	21



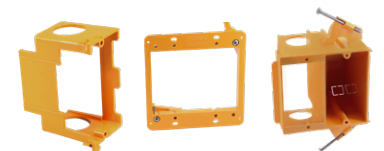
## EZ BOX® Vapor Boxes

Vapor Box Overview.....	22
Single, Two & Three Gang Vapor Boxes.....	22
Ceiling Vapor Boxes.....	22



## EZ BOX® Low Voltage

EZ BOX Low Voltage Overview.....	23
Single & Two Gang Low Voltage Brackets.....	23
Single Gang Low Voltage Add-on Bracket.....	23
Low Voltage Nail-on Single and Two Gang Brackets .....	24
EZ BOX New Work Dual Voltage Bracket.....	24
EZ BOX Low Voltage Divider.....	24



## EZ BOX® Red Alarm Boxes

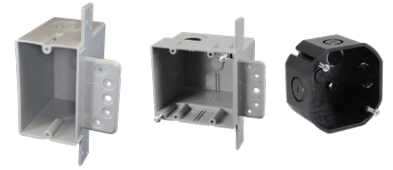
Red Alarm Box Overview.....	25
Single Gang Red Alarm Switch & Outlet Boxes.....	25
Red Alarm Ceiling Boxes.....	25



# Table of Contents

## EZ BOX® ENT Boxes

EZ BOX ENT Boxes Overview.....	26
Single Gang and 4" Square ENT Boxes.....	26
Two Gang ENT Boxes.....	27
ENT Ceiling Boxes.....	27



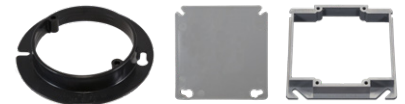
## EZ BOX® Handy Wall Box and Covers

EZ BOX Handy Box.....	28
EZ BOX Handy Covers.....	28



## EZ BOX® Accessories

EZ BOX Round Ceiling Outlet Cover.....	28
EZ BOX Non-Metallic Round Plastic Ring (Mud Ring).....	29
Single & Two Gang Cover Risers.....	29
EZ BOX Round and Square Covers.....	30



## EZ BOX® Cross Reference

EZ BOX Part Number Cross Reference Guide.....	31
---	----

## Introduction to the EZ BOX® Line

### Why CANTEX EZ BOXES?

The CANTEX EZ BOX® line offers a complete selection of non-metallic electrical switch, outlet and ceiling boxes in multiple sizes and styles to meet all your new construction and renovation project needs. Whether you need EZ nail-on, single-gang boxes with enhanced angled nails for installation between studs or adjustable EZ BOXES with adjustable brackets for the perfect fit on tile backsplashes, CANTEX has a solution. The EZ BOX line has easy to install, long-wearing, maintenance-free non-metallic electrical boxes for all your projects. You can choose from one of our many wall boxes, which are made of durable easy to install PVC or one of our many ceiling and ceiling fan boxes that are made of polycarbonate for even more strength. CANTEX offers almost 100 styles of EZ BOXES in multiple sizes and gang applications to meet all your new and old work project needs.

CANTEX EZ BOXES are all ETL or UL listed for use as in the Article 314 of the National Electrical code. They are also 2-hour fire-rated when applicable. Plus, the CANTEX EZ Box line is backed by over 60 years of experience manufacturing unrivaled American-made electrical products. The EZ BOX line is also supported by our long history of providing quality products, great service and fast, dependable delivery.



For over 70 years, our engineers have stayed ahead of the industry by continually seeking ways to improve product designs for better functionality and to insure that our products meet or exceed industry standards. At CANTEX, we know that better functionality translates into important time and labor cost savings for the end user. Special features on our EZ BOXES like angled nails and well-engineered wiring clamps and knockouts are carefully designed for EZ installation. Browse this EZ BOX catalog or visit [www.cantexinc.com](http://www.cantexinc.com) to learn more about how CANTEX EZ Boxes can make fast and EZ work of residential and light commercial electrical installations.

# EZ BOX® Product Identifiers

## Part Number Legend

**EZ BOX PRODUCT #:** **EZ 34 DO - HW**

Identifies the CANTEX  
EZ BOX line or  
EZ BOX subgroup.  
EZ = EASY  
EN = ENT  
EDV = Dual Voltage

04 = 4 Cubic Inches  
08 = 8 Cubic Inches  
10 = 10 Cubic Inches  
12 = 12 Cubic Inches  
14 = 14 Cubic Inches  
16 = 16 Cubic Inches  
18 = 18 Cubic Inches  
20 = 20 Cubic Inches  
21 = 21 Cubic Inches  
22 = 22 Cubic Inches  
23 = 23 Cubic Inches  
26 = 26 Cubic Inches  
32 = 32 Cubic Inches  
34 = 34 Cubic Inches  
36 = 36 Cubic Inches  
44 = 44 Cubic Inches  
48 = 48 Cubic Inches  
53 = 53 Cubic Inches  
54 = 54 Cubic Inches  
55 = 55 Cubic Inches  
64 = 64 Cubic Inches  
68 = 68 Cubic Inches  
74 = 74 Cubic Inches

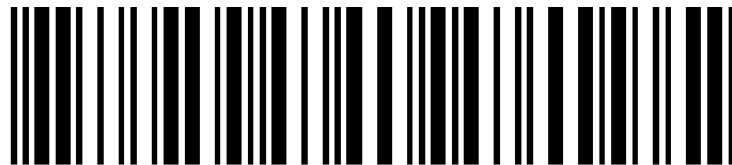
A = Alarm  
B = Bracketed  
C = Ceiling Box  
D = Double (2) Gang  
E = Extended Cover  
F = Flanged  
G = Ground Lug  
H = Hanger  
K = Blank  
L = Lid (Cover)  
M = Metal  
N = Nail On  
O = Old Work  
P = Project Pack  
Q = Quad (4) Gang  
R = Retail Pack  
S = Single (1) Gang  
T = Triple (3) Gang  
U = Express Clip  
W = Knock Outs  
X = 4" Square  
Y = 4" Round  
Z = Screw Nail

ADJ = Adjustable  
HW = Heavy Wall  
RG = Vaporproof  
NWN = New Work  
OW = Old Work  
SW = Heavy Wall  
Divider  
EXT = Extender

## Uniform Product Codes - Bar Codes

### UPC - ITF

Shipping container bar code to identify each standard carton of products using interleaved 2 of 5 symbology.



3 00 88700 97061 9

PACKAGING  
LEVEL

NUMBER SYSTEM  
CHARACTERS

MANUFACTURER  
I.D. NUMBER

ITEM NUMBER

CHECK DIGIT

# EZ BOX® New Work Switch & Outlet Boxes

## CANTEX NEW WORK EZ BOXES

Our new work (new construction) switch, outlet and ceiling boxes are perfect for residential and light commercial use. They are carefully engineered to make new work installations EZ and cost effective. Our huge selection of non-metallic electrical new work EZ BOXES offers the versatility needed to meet all new work project specifications with maintenance free, EZ to install electrical, switch, outlet, ceiling and ceiling fan boxes.



Numerous Options

## THE BENEFITS OF CANTEX NEW WORK EZ BOXES:

### EZ Wiring Options

Choice of preferred EZ wiring options like traditional clamps, v-clamps, or knockouts.



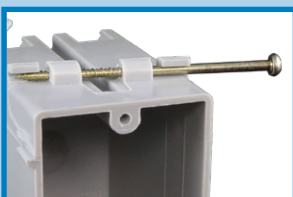
### EZ Installation Options

EZ to install with enhanced angled nails for easy mounting between studs. Just line up and hammer in the nails.



### Cost-Saving Solutions

Cost-saving options like our Express Clip® cut down on labor time and cost. Just align a switch or outlet device with the mounting hole, push the device's screw into the Express Clip® and one half turn of the screw completes an EZ and secure installation.



The screw nail option features a sharp point, slotted head, threaded body screw-nail for easy installation using a power screwdriver without having to pre-drill.

### Installation Options

Great installation options like molded and metal brackets for specific application needs like steel studs or unusual space between studs.



# EZ BOX® New Work Switch & Outlet Boxes

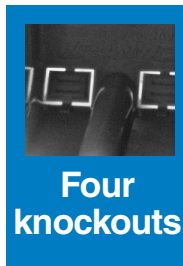
Technical drawings for each product can be found on the product pages at [www.cantexinc.com](http://www.cantexinc.com).

## EZ BOX® Single Gang New Work Switch & Outlet Boxes

### EZ BOX New Work, Nail-on, Switch and Outlet Box with Knockouts



EZ18SNW, EZ20SNW & EZ23SNW are 1-gang, electrical switch and outlet boxes for residential or light commercial electrical installations with 4 knockouts for EZ wiring and enhanced angled nails for EZ more secure mounting between studs.



**Four knockouts**



2 hour fire-rated

#### 18 Cubic Inch

Part Number	Carton Quantity	Height	Width	Depth
EZ18SNW	100	3.700	2.250	2.875

Dimensions are nominal

#### 20.8 Cubic Inch

Part Number	Carton Quantity	Height	Width	Depth
EZ20SNW	100	3.700	2.250	3.125

Dimensions are nominal

#### 23 Cubic Inch

Part Number	Carton Quantity	Height	Width	Depth
EZ23SNW	100	3.700	2.250	3.500

Dimensions are nominal

### EZ BOX New Work Switch and Outlet Box with Screw Nails



EZ18SNWZ, EZ20SNWZ & EZ23SNWZ are 1-gang electrical switch and outlet boxes for residential or light commercial electrical installations. They feature knockouts for EZ wiring and screw-nails for use on aluminum, light to medium grade steel or wood studs. The sharp point, slotted head and threaded body allow for EZ installation with a power screwdriver without pre-drilling.



**Four knockouts**



2 hour fire-rated

#### 18 Cubic Inch

Part Number	Carton Quantity	Height	Width	Depth
EZ18SNWZ	100	3.700	2.250	2.875

Dimensions are nominal

#### 20.8 Cubic Inch

Part Number	Carton Quantity	Height	Width	Depth
EZ20SNWZ	100	3.700	2.250	3.125

Dimensions are nominal

#### 23 Cubic Inch

Part Number	Carton Quantity	Height	Width	Depth
EZ23SNWZ	100	3.700	2.250	3.500

Dimensions are nominal

# EZ BOX® New Work Switch & Outlet Boxes

Technical drawings for each product can be found on the product pages at [www.cantexinc.com](http://www.cantexinc.com).

## EZ BOX® Two Gang New Work Switch & Outlet Boxes



2 hour fire-rated

### EZ BOX New Work, Nail-on, 2-Gang, 32 cu. in., Switch and Outlet Box with Wire Clamps

EZ32DN EZ BOX is a 32 cu. in., 2-gang, nail-on, electrical switch and outlet box for residential or light commercial new construction (new work) electrical installations. It features 8 wire clamps and enhanced angled nails for EZ installation.



8 integral clamps for EZ & secure wiring

### 32 Cubic Inch

Part Number	Carton Quantity	Height	Width	Depth
EZ32DN	50	3.688	3.938	2.750

Dimensions are nominal



2 hour fire-rated

### EZ BOX New Work, 32 cu. in. Switch and Outlet Box with Screw Nails and Wire Clamps

EZ32DNZ EZ BOX is a 32 cu. in., 2-gang, electrical switch and outlet box for residential or light commercial electrical installations. It features screw-nails for use on aluminum, light to medium grade steel or wood studs. The sharp point, slotted head and threaded body allow for easy installation using a power screwdriver without having to pre-drill. It can also be installed on wood studs using a hammer.



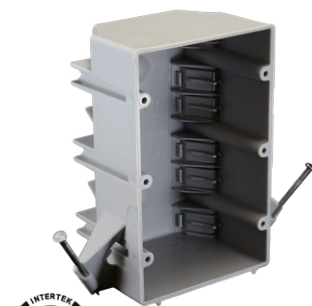
8 integral clamps for EZ & secure wiring

### 32 Cubic Inch

Part Number	Carton Quantity	Height	Width	Depth
EZ32DNZ	50	3.688	3.938	2.750

Dimensions are nominal

## EZ BOX® Three Gang New Work Switch & Outlet Boxes



2 hour fire-rated

### EZ BOX 3-Gang, 44 cu. in., New Work, Nail-on Switch and Outlet Box with Wire Clamps

EZ44TN is a 44 cu. in., 3-gang, nail-on, electrical switch and outlet box for residential or light commercial new construction (new work) electrical installations. It features 12 wire clamps and enhanced angled nails for easy installation.

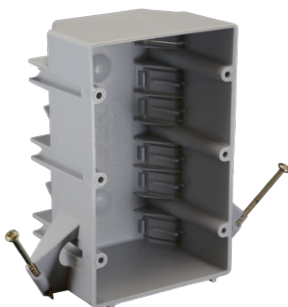


12 integral clamps for EZ & secure wiring

### 44 Cubic Inch

Part Number	Carton Quantity	Height	Width	Depth
EZ44TN	50	3.700	5.800	2.750

Dimensions are nominal



2 hour fire-rated

### EZ BOX 3-Gang, 44 cu. in, New Work Switch & Outlet Box with Screw Nails and Wire Clamps

EZ44TNZ is a 44 cu. in., 3-gang electrical switch and outlet box for residential or light commercial electrical installations. It features screw-nails for use on aluminum, light to medium grade steel or wood studs. The sharp point, slotted head and threaded body allow for easy installation using a power screwdriver without having to pre-drill. It can also be installed with a hammer on wood studs.



12 integral clamps for EZ & secure wiring

### 44 Cubic Inch

Part Number	Carton Quantity	Height	"B"	"C"
EZ44TNZ	50	3.700	5.800	2.750

Dimensions are nominal

# EZ BOX® New Work Switch & Outlet Boxes

Technical drawings for each product can be found on the product pages at [www.cantexinc.com](http://www.cantexinc.com).

## EZ BOX® Four Gang New Work Switch & Outlet Boxes with Adjustable Brackets

### EZ BOX 4-Gang, New Work, Nail-on, Switch & Outlet Box with Adjustable Bracket & Wire Clamps

EZ55QNB EZ BOX is a 55 cu. in., 4-gang, nail-on, electrical, switch and outlet box for residential or light commercial new construction (new work) electrical installations. It features an adjustable metal bracket for quick mounting between studs as well as 12 wire clamps and enhanced angled nails for EZ installation.



2 hour fire-rated



12 integral clamps for EZ & secure wiring

#### 55 Cubic Inch

Part Number	Carton Quantity	Height	Width	Depth
EZ55QNB	25	3.712	7.629	2.614

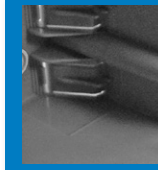
Dimensions are nominal

### EZ BOX 4-Gang, New Work, Switch & Outlet Box with Screw Nails, Adjustable Bracket & Wire Clamps

EZ55QNBZ is a 55 cu. in., 4-gang, electrical, switch and outlet box for residential or light commercial new construction (new work) electrical installations. It features an adjustable metal bracket for quick mounting between studs as well as screw-nails for EZ installation on aluminum or light to medium grade steel or wood studs. The screw-nail's sharp point, slotted head and threaded body allow for installation using a power screwdriver without having to pre-drill. EZ55QNBZ can also be hammered into wood studs.



2 hour fire-rated



12 integral clamps for EZ & secure wiring

#### 55 Cubic Inch

Part Number	Carton Quantity	Height	Width	Depth
EZ55QNBZ	25	3.712	7.629	2.614

Dimensions are nominal

## EZ BOX® Electrical Single Gang Switch & Outlet Boxes with Bracket for Steel or Wood Studs

### EZ BOX 1-Gang, New Work, Switch & Outlet Box with Steel Stud Bracket & Wire Clamps

CANTEX EZ20SB EZ BOX is a 20 cu. in., 1-gang, electrical, switch and outlet box for residential or light commercial new construction (new work) electrical installations with a molded bracket for steel stud mounting. It also features 4 contractor preferred v-clamps.



2 hour fire-rated



Features 4 V-clamps for EZ & secure wiring

#### 20.3 Cubic Inch

Part Number	Carton Quantity	Height	Width	Depth
EZ20SB	100	3.688	2.250	3.188

Dimensions are nominal

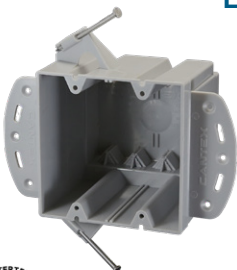
## EZ BOX® Electrical Two Gang Switch & Outlet Boxes with Bracket for Steel or Wood Studs

### EZ BOX 2-Gang, Deep, 48 cu. in., New Work, Nail-on, Switch and Outlet Box with Steel Stud Bracket

EZ48DN is a 48 cu. in., 2-gang, nail-on, electrical, switch and outlet box for residential or light commercial new construction (new work) electrical installations that also has molded brackets for steel stud mounting. It features 8 wire v-clamps and enhanced angled nails for EZ and more secure installation.



2 hour fire-rated



- Largest 2-Gang PVC cu. in. box on the market
- Accepts larger wiring devices like dimming switches or motions sensors
- Allows for additional wire capacity
- Dividers are available to partition boxes for installation of low voltage/communication devices (EZLVD).

#### 48 Cubic Inch

Part Number	Carton Quantity	Height	Width	Depth
EZ48DN	50	4.000	4.000	4.000

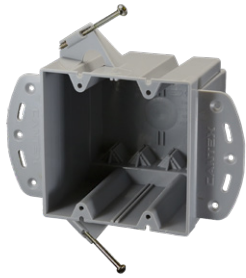
Dimensions are nominal

# EZ BOX® New Work Switch & Outlet Boxes

Technical drawings for each product can be found on the product pages at [www.cantexinc.com](http://www.cantexinc.com).

## EZ BOX® Electrical Two Gang Switch & Outlet Boxes with Bracket for Steel or Wood Studs

### EZ BOX 2-Gang, Deep, New Work, Switch & Outlet Box with Screw Nails and Bracket for Steel Studs



EZ48DNZ is a 48 cu. in., 2-gang, electrical, switch and outlet box for residential or light commercial new construction (new work) installations with molded brackets for steel stud mounting and screw-nails for use on aluminum, light to medium grade steel or wood studs. The sharp point, slotted head and threaded body of the screw-nails allow for easy installation using a power screwdriver with no need to pre-drill. It can also be installed on wood studs using a hammer. It also features 8 wire v-clamps.

- Largest 2-Gang PVC cu. in. box on the market
- Accepts larger wiring devices like dimming switches or motions sensors
- Allows for additional wire capacity
- Dividers are available to partition boxes for installation of low voltage/communication devices (EZLVD).

#### 48 Cubic Inch

Part Number	Carton Quantity	Height	Width	Depth
EZ48DNZ	50	4.000	4.000	4.000

Dimensions are nominal



US 2 hour fire-rated

## EZ BOX 2-Gang Deep New Work Nail-on Switch and Outlet Box with Steel Stud Bracket, Wire Clamps, & Express Clip



EZ48DNU is a 48 cu. in. 2-gang, nail-on switch and outlet box for residential or light commercial new construction (new work) electrical installations. It features molded brackets for steel stud mounting along with 8 v-clamps, and Express Clips® for EZ installation. Express Clip® allows for EZ secure installation of electrical devices. Just align device with mounting holes, push in and turn the screw.

- Largest 2-Gang PVC cu. in. box on the market
- Accepts larger wiring devices like dimming switches or motions sensors
- Allows for additional wire capacity
- Dividers are available to partition boxes for installation of low voltage/communication devices (EZLVD).

#### 48 Cubic Inch

Part Number	Carton Quantity	Height	Width	Depth
EZ48DNU	50	4.000	4.000	4.000

Dimensions are nominal

Express Clip®



US 2 hour fire-rated

## EZ BOX® Electrical Three Gang Switch & Outlet Boxes with Bracket for Steel or Wood Studs

### EZ BOX 3-Gang, Deep, New Work, Nail-on, Switch & Outlet Box with Steel Stud Bracket



EZ74TN is a 74 cu. in., 3-gang, nail-on, electrical, switch and outlet box for residential or light commercial new construction (new work) installations with molded brackets for steel stud mounting. It also features 12 contractor preferred wire v-clamps and enhanced angled nails for easy installation.

- Largest 3-Gang PVC cu. in. box on the market
- Accepts larger wiring devices like dimming switches or motions sensors
- Allows for additional wire capacity
- Dividers are available to partition boxes for installation of low voltage/communication devices (EZLVD).

#### 74 Cubic Inch

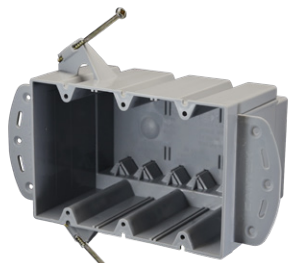
Part Number	Carton Quantity	Height	Width	Depth
EZ74TN	50	4.000	6.000	3.000

Dimensions are nominal



US 2 hour fire-rated

## EZ BOX 3-Gang, Deep, New Work, Switch and Outlet Box with Screw Nails and Steel Stud Brackets



EZ74TNZ is a 74 cu. in., 3-gang, electrical, switch and outlet box for residential or light commercial new construction (new work) electrical installations with molded brackets for steel stud mounting and screw-nails for EZ installation on aluminum, light to medium grade steel or wood studs. The screw-nail's sharp point, slotted head and threaded body allow for installation using a power screwdriver with no need to pre-drill. It also features 12 v-clamps and enhanced angled nails for easy installation.

- Largest 3-Gang PVC cu. in. box on the market
- Accepts larger wiring devices like dimming switches or motions sensors
- Allows for additional wire capacity
- Dividers are available to partition boxes for installation of low voltage communication devices (EZLVD).

#### 74 Cubic Inch

Part Number	Carton Quantity	Height	Width	Depth
EZ74TNZ	50	4.000	6.000	3.000

Dimensions are nominal



US 2 hour fire-rated

# EZ BOX® New Work Switch & Outlet Boxes

## EZ BOX Deep, 3-Gang, New Work, Nail-on, Switch & Outlet Box, w/ Steel Stud Brackets & Express Clip



CANTEX EZ74TNU EZ BOX is a 74 cu. in. 3-gang nail-on electrical switch and outlet box for residential or light commercial new construction (new work) electrical installations. It features molded brackets for steel stud mounting along with 12 v-clamps and an Express Clip for EZ installation. Express Clip® allows for EZ secure installation of electrical devices. Just align device with mounting holes, tap and turn the screw.



Express Clip®

US 2 hour fire-rated

- Largest 3-Gang PVC cu. in. box on the market
- Accepts larger wiring devices like dimming switches or motions sensors
- Allows for additional wire capacity
- Dividers are available to partition boxes for installation of low voltage communication devices (EZLVD).

### 74 Cubic Inch

Part Number	Carton Quantity	Height	Width	Depth
EZ74TNU	50	4.000	6.000	3.000

Dimensions are nominal

## EZ BOX Deep, 3-Gang, New Work, Switch & Outlet Box w/ Screw Nails, Steel Stud Brackets & Express Clip



EZ74TNZU is a 74 cu. in., 3-gang, switch & outlet box for residential or light commercial new construction (new work) electrical installations. It features molded brackets for steel stud mounting, 12 v-clamps, Express Clips® and screw-nails for EZ installation. The sharp point, slotted head and threaded body of screw-nails allow for installation using a power screwdriver without pre-drilling aluminum, light to medium grade steel or wood studs. Express Clip® allows for EZ secure installation of electrical devices. Just align device with mounting holes, tap and turn the screw.



US 2 hour fire-rated



Express Clip®

- Largest 3-Gang PVC cu. in. box on the market
- Accepts larger wiring devices like dimming switches or motions sensors
- Allows for additional wire capacity
- Dividers are available to partition boxes for installation of low voltage communication devices (EZLVD).

### 74 Cubic Inch

Part Number	Carton Quantity	Height	Width	Depth
EZ74TNZU	50	4.000	6.000	3.000

Dimensions are nominal

## EZ BOX® Low Voltage Divider for Use with Multi-Gang Deep Boxes



### EZ BOX Low Voltage Divider for Use with Multi-Gang Deep Boxes

EZLVD Low Voltage Divider allows the installation of communication devices in a closed back multi-gang deep box along with a standard switch or outlet devices. EZLVD is used with the following CANTEX 2 or 3-gang EZ BOXES: EZ48DN, EZ48DNZ, EZ48DNU, EZ74TN, EZ74TNZ, and EZ74TNU.

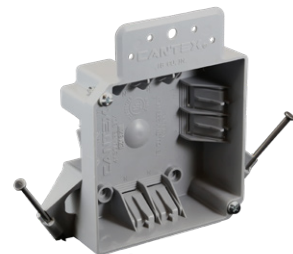
### Low Voltage Divider

Part Number	Carton Quantity	Height	Width	Depth
EZLVD	50	3.834	3.870	.080

Dimensions are nominal

## EZ BOX® Four Inch Square Non-Metallic Electrical Boxes

### EZ BOX 4 Inch, Square, 18 Cu. In., New Work, Nail-on Electrical Box with Wire Clamps



EZ18XN is an 18 cu. in., 4" square, PVC box for residential or light commercial new construction (new work) electrical installations with a molded flange and enhanced angled nails for EZ mounting. 4" square boxes provide maximum volume for multiple conductors and connectors that often run in two or more directions. Great for walls or ceilings for fixtures, switches or receptacles. CANTEX 4" square boxes are often used with solid PVC blank covers likes CANTEX EZXKL. It features 8 integral wire clamps to hold wires securely.



US 2 hour fire-rated



8 integral clamps for EZ & secure wiring

### 18 Cubic Inch

Part Number	Carton Quantity	Height	Width	Depth
EZ18XN	75	4.000	4.000	1.625

Dimensions are nominal

### EZ BOX 4 Inch, Square, 32 Cu. In., New Work, Nail-on, Electrical Box with Wire Clamps



EZ32XN is a 32 cu. in., 4" square, PVC box for residential or light commercial new construction (new work) electrical installations with enhanced angled nails for EZ mounting. 4" square boxes provide maximum volume for multiple conductors and connectors that often run in two or more directions. Great for walls or ceilings for fixtures, switches or receptacles. CANTEX 4" square boxes are often used with solid PVC blank covers likes CANTEX EZXKL. 10 integral wire clamps to hold wires securely.



US 2 hour fire-rated



10 integral clamps for EZ & secure wiring

### 32 Cubic Inch

Part Number	Carton Quantity	Height	Width	Depth
EZ32XN	50	4.000	4.000	2.625

Dimensions are nominal

# EZ BOX® New Work Switch & Outlet Boxes

Technical drawings for each product can be found on the product pages at [www.cantexinc.com](http://www.cantexinc.com).

## EZ BOX® Shallow Bracketed New Work Nail-on Switch & Outlet Box

### EZ BOX 1-Gang, 8 cu. in, Shallow, New Work, Nail-on, Switch and Outlet Box with Bracket



2 hour fire-rated

CANTEX EZ08SB is a 1-gang, 8 cubic inch, PVC switch or outlet box that is great for residential and light commercial new construction (new work) applications where a shallow electrical box is needed. It features a molded-on PVC bracket for easy mounting on wood or metal studs. It mounts easily to studs with a convenient side bracket. Engineered for easy, cost saving installation and constructed with resilient PVC for durability.

The shallow depth of 1-1/4 inches is great for tight spaces.

#### 8 Cubic Inch

Part Number	Carton Quantity	Height	Width	Depth
EZ08SB	25	3.563	2.250	1.250

Dimensions are nominal

## EZ BOX® Nail-on New Work Ceiling Boxes

### EZ BOX 18 cu. in., New Work, Nail-on, Ceiling Box with Wire Clamps



2 hour fire-rated

The EZ18CN EZ BOX is an 18 cu. in., new work (new construction) residential ceiling box for residential and light commercial ceiling applications. It features six wire clamps and enhanced angled nails for easy installation. Attached mounting nails are included. CANTEX ceiling boxes are designed for easy, cost saving installation and constructed with durable polycarbonate for added resilience.

- Supports fixtures up to 50 lbs.
- Not suitable for ceiling fans.

#### 18 Cubic Inch

Part Number	Carton Quantity	Height	Width	Depth
EZ18CN	75	3.500	3.500	2.680

Dimensions are nominal

### EZ BOX 18 cu. in., New Work, Nail-on, Ceiling Box with Wire Clamps and Ground Lug



2 hour fire-rated

CANTEX EZ18CNG EZ BOX is an 18 cu. in., new work (new construction) residential ceiling box for residential and light commercial ceiling applications. It features six wire clamps and enhanced angled nails for easy installation and a ground lug for grounding. Attached mounting nails are included. CANTEX ceiling boxes are designed for easy, cost saving installation and constructed with durable polycarbonate for added resilience.

- Supports fixtures up to 50 lbs.
- Not suitable for ceiling fans.

#### 18 Cubic Inch

Part Number	Carton Quantity	Height	Width	Depth
EZ18CNG	75	3.500	3.500	2.680

Dimensions are nominal

### EZ BOX 20 cu. in., New Work, Nail-on Ceiling Box with Wire Clamps



2 hour fire-rated

CANTEX EZ20CN EZ BOX is a 20 cu. in., new work (new construction) residential ceiling box for residential and light commercial ceiling applications. It features six wire clamps and enhanced angled nails for easy installation. Attached mounting nails are included. CANTEX ceiling boxes are designed for easy, cost saving installation and constructed with durable polycarbonate for added resilience.

- Supports fixtures up to 50 lbs.
- Not suitable for ceiling fans.

#### 20 Cubic Inch

Part Number	Carton Quantity	Height	Width	Depth
EZ20CN	75	4.000	4.000	2.300

Dimensions are nominal

# EZ BOX® New Work Ceiling & Ceiling Fan Boxes

Technical drawings for each product can be found on the product pages at [www.cantexinc.com](http://www.cantexinc.com).

## EZ BOX® New Work Ceiling Boxes

### EZ BOX New Work, 20 cu. in., Nail-on, Ceiling Box with Wire Clamps and Ground Lug



EZ20CNG EZ BOX is a 20 cu. in., new work (new construction) residential ceiling box for residential and light commercial ceiling applications. It features six wire clamps and enhanced angled nails for easy installation and a ground lug for grounding. Attached mounting nails are included. CANTEX ceiling boxes are designed for easy, cost saving installation and constructed with durable polycarbonate for added resilience.



- Supports fixtures up to 50 lbs.
- Not suitable for ceiling fans.

#### 20 Cubic Inch

Part Number	Carton Quantity	Height	Width	Depth
EZ20CNG	75	4.000	4.000	2.300

Dimensions are nominal

### EZ BOX New Work, 20 cu. in. Ceiling Box with Hanger Bar and Wire Clamps

EZ20CHL EZ BOX is a 20 cu. in., new work (new construction) ceiling box with an attached bar hanger for adjustable, support between ceiling joists. It is for residential and light commercial ceiling applications. EZ20CHL features 6 wire clamps and an adjustable bar hanger that adjusts from 14" to 24" for added support and installation options. CANTEX ceiling boxes are designed for easy, cost saving installation and constructed with durable polycarbonate for added resilience.

#### 20 Cubic Inch

Part Number	Carton Quantity	Height	Width	Depth	Expands
EZ20CHL	75	4.000	4.000	2.300	14" to 24"

Dimensions are nominal

- Supports fixtures up to 50 lbs.
- EZ20CHL is rated for ceiling fans up to 35 lbs.



**EZ20CHL**  
Expands 14" to 24"



### EZ BOX New Work, 20 cu. in. Ceiling Box with Hanger Bar, Wire Clamps and Ground Lug

EZ20CHGL EZ BOX is a 20 cu. in., new work (new construction) ceiling box with an attached bar hanger for adjustable, support between ceiling joists as well as a ground lug for grounding. It is for residential and light commercial ceiling applications. EZ20CHGL features wire clamps and an adjustable bar hanger that adjusts from 14" to 24" for added support and installation options. CANTEX ceiling boxes are designed for easy, cost saving installation and constructed with durable polycarbonate for added resilience.

#### 20 Cubic Inch

Part Number	Carton Quantity	Height	Width	Depth	Expands
EZ20CHGL	75	4.000	4.000	2.300	14" to 24"

Dimensions are nominal

- Supports fixtures up to 50 lbs.
- EZ20CHGL is rated for ceiling fans up to 35 lbs.



**EZ20CHGL**  
Expands 14" to 24"



# EZ BOX<sup>®</sup> New Work Ceiling & Ceiling Fan Boxes

Technical drawings for each product can be found on the product pages at [www.cantexinc.com](http://www.cantexinc.com).

## EZ BOX<sup>®</sup> New Work Ceiling Fan Boxes



### EZ BOX New Work, 12 cu. in. Ceiling Fan Box with Screws and Wire Clamps

EZ12CF is a 12 cu. in. new construction (new work) ceiling fan box for residential and light commercial new construction (new work) applications. EZ12CF accommodates 3-1/2" and 2-9/16" mounting. CANTEX ceiling fan boxes are designed for easy, cost saving installation and they are constructed with durable polycarbonate for added resilience. The mounting screws are included.

#### 12 Cubic Inch

Part Number	Carton Quantity	Height	Width	Depth
EZ12CF	24	3.875	4.000	2.625

Dimensions are nominal

- Supports fans up to 70 lbs.
- Fixture support up to 200 lbs.



US 2 hour fire-rated

### EZ BOX Shallow, 8 cu. in., New Work Ceiling Fan Box with Screws & Wire Clamps



EZ08CZ is a 8 cu. in. shallow, new construction (new work) ceiling fan box for residential and light commercial new construction (new work) applications where a shallow ceiling fan box is needed. EZ08CZ is great for new work ceiling fan applications in tight shallow spaces. CANTEX ceiling fan boxes are designed for easy, cost saving installation and they are constructed with durable polycarbonate for added resilience.

#### 8 Cubic Inch

Part Number	Carton Quantity	Height	Width	Depth
EZ08CZ	25	4.250	4.250	1.000

Dimensions are nominal

- Supports fans up to 35 lbs.
- Fixture support up to 50 lbs.



US 2 hour fire-rated

### EZ BOX Deep, 20 cu. in., New Work Ceiling Fan Box with Screws and Wire Clamps



EZ20CZ deep ceiling fan box for (new work) new construction applications is a 20 cu. in. ceiling fan box. EZ20CZ is good for residential and light commercial applications. It features 6 wiring clamps for easy wire installation. CANTEX ceiling fan boxes are designed for easy, cost saving installation and they are constructed with durable polycarbonate for added resilience.

#### 20 Cubic Inch Ceiling Fan Box

Part Number	Carton Quantity	Width	Height	Depth
EZ20CZ	18	4.000	4.000	2.300

Dimensions are nominal

- Supports fans up to 35 lbs.
- Fixture support up to 50 lbs.



US 2 hour fire-rated

# EZ BOX® Old Work Switch, Outlet and Ceiling Boxes

## CANTEX OLD WORK EZ BOXES

Our old work (renovation) application switch, outlet and ceiling boxes are perfect for residential and light commercial use. Our large selection of PVC electrical old work EZ Boxes offers several options for meeting all old work project specifications.

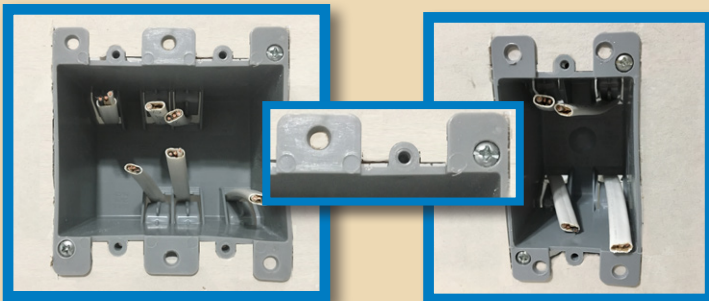
Our old work electrical switch and outlet boxes are made of non-conductive, durable, easy-to-install PVC while our old work ceiling boxes are crafted of durable polycarbonate for extra strength. This old work box line is designed for simple installation for old work projects and can also be used on masonry walls when the wall is enclosed. Since our old work PVC EZ BOXES come with their own mounting systems, there is no need to fasten them to studs, which makes electrical work for remodeling projects as EZ as possible. Besides, non-metallic boxes provide an easy-to-install and to change out option, so they are a great electrical installation choice for keeping up with the ever-changing electrical needs that come with technological advancements.



## THE BENEFITS OF CANTEX OLD WORK EZ BOXES:

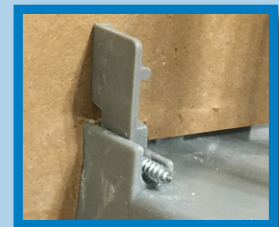
### EZ Installation

The molded EZ mount flanges make it EZ to attach our old work boxes to any walls for any old work (renovation) projects. Just insert the box in a freshly cut hole or an existing hole and attach it to the wall.



### At Work Behind the Walls

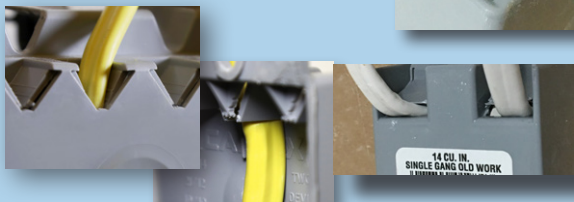
CANTEX EZ BOX old work boxes work behind the scenes to ensure they are locked into place. Winged swing tabs help lock CANTEX EZ BOX old work boxes in place. Just twist and tighten the wing tabs for an added measure of security.



### Secure Wire Clamp Options

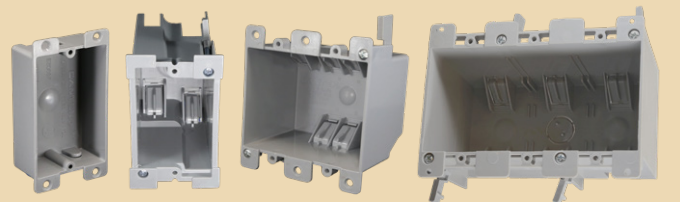
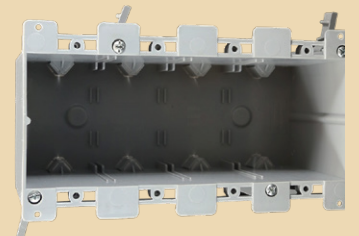


CANTEX old work EZ BOXES offer a variety of secure wiring clamp options to meet all of your wiring needs.



### The Capacity You Need

CANTEX EZ BOXES offer a variety of capacity options to provide room for all of your old work electrical wiring and installation needs.



# EZ BOX® Old Work Switch, Outlet and Ceiling Boxes

Technical drawings for each product can be found on the product pages at [www.cantexinc.com](http://www.cantexinc.com).

## EZ BOX® Single Gang Old Work Switch & Outlet Boxes

### EZ BOX 1-Gang, 14 cu. in., Old Work, Switch and Outlet Box with EZ Mount Clamps & Wire Clamps



EZ14SO EZ BOX is a 1-Gang, 14 cu. in., renovation application (old work), electrical switch or outlet box for residential or light commercial renovation projects. EZ mount flanges, winged swing tabs and 4 built-in integral wire clamps make installation easy and cost effective. The new design provides a guide for a straight outline. No template is needed. Just trace the outline and cut.



2 hour fire-rated



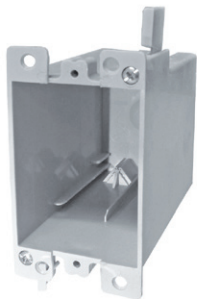
4 integral clamps for EZ & secure wiring

#### 14 Cubic Inch

Part Number	Carton Quantity	Height	Width	Depth
EZ14SO	50	2.900	2.250	2.803

Dimensions are nominal

### EZ BOX 21 cu. in., 1-Gang, Old Work, Switch and Outlet Box with EZ Mount Flanges & V-Clamps



EZ21SO EZ BOX is a 1-Gang, 21 cu. in., renovation application (old work) electrical switch or outlet box for residential or light commercial renovation (old work) projects when a 1-gang box is needed. EZ mount flanges, winged swing tabs and 4 built-in, contractor preferred v-clamps make installation easy and cost effective.



4 v-clamps for EZ & secure wiring

#### 21 Cubic Inch

Part Number	Carton Quantity	Height	Width	Depth
EZ21SO	50	3.850	2.400	3.600

Dimensions are nominal

### EZ Box 1-Gang, 18 cu. in., Old Work, Heavy Wall Switch & Outlet Box with EZ Mount Flanges & Wire Clamps



EZ18SO-HW is a 18 cu. in., 1-gang old work, heavy wall electrical switch and outlet EZ BOX for renovation projects (old work). This heavy duty box with EZ mount flanges and winged mounting tabs is perfect for residential and light commercial applications where a more durable shell is desired. The harder shell resists flexing in various conditions. Wing tabs allow for easy, secure stud alignment & mounting.



4 integral clamps for EZ & secure wiring

#### 18 Cubic Inch

Part Number	Carton Quantity	Height	Width	Depth
EZ18SO-HW	36	3.2850	2.400	3.600

Dimensions are nominal

## EZ BOX® Two Gang Old Work Switch & Outlet Boxes

### EZ BOX 2-Gang, 25 cu. in., Old Work Switch and Outlet Box with EZ Mount Flanges and Wire Clamps



EZ25DO EZ BOX is a 2-Gang, 25 cu. in., renovation application (old work) electrical switch or outlet box for residential or light commercial renovation projects when a 2-gang box is needed. EZ mount flanges, winged swing tabs and built in wire clamps make installation easy and cost effective.



2 hour fire-rated



6 integral clamps for EZ & secure wiring

#### 25 Cubic Inch

Part Number	Carton Quantity	Height	Width	Depth
EZ25DO	30	3.125	4.000	2.875

Dimensions are nominal

# EZ BOX® Old Work Switch, Outlet and Ceiling Boxes

Technical drawings for each product can be found on the product pages at [www.cantexinc.com](http://www.cantexinc.com).

## EZ BOX® Two Gang Old Work Switch & Outlet Boxes

### EZ BOX Old Work, Heavy Wall, 2-Gang, 34 cu. in. Switch & Outlet Box with EZ Mount Flanges and Wire Clamps



EZ34DO-HW is the CANTEX 2-gang, 34 cu. in., heavy wall, electrical switch and outlet EZ BOX for renovation projects (old work). This heavy duty box with winged mounting tabs is perfect for residential and light commercial applications where a more durable, harder shell is desired to resist flexing.



8 integral clamps for EZ & secure wiring

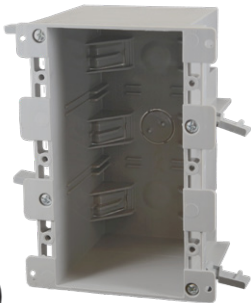
#### 34 Cubic Inch

Part Number	Carton Quantity	Height	Width	Depth
EZ34DO-HW	18	3.850	4.200	3.500

Dimensions are nominal

## EZ BOX® Multi-Gang Old Work Switch & Outlet Boxes

### EZ BOX, 3-Gang, Old Work, 55 cu. in. Switch and Outlet Box with EZ Mount Flanges and Wire Clamps



EZ55TO EZ BOX is a 3-Gang, 55 cu. in., renovation application (old work) electrical switch or outlet box for residential or light commercial renovation projects when a 3-gang box is needed. EZ mount flanges, winged swing tabs and built in wire clamps make installation easy and cost effective.



6 integral clamps for EZ & secure wiring

#### 55 Cubic Inch

Part Number	Carton Quantity	Height	Width	Depth
EZ55TO	6	3.720	6.000	3.630

Dimensions are nominal

### EZ BOX 4-Gang, 68 cu. in., Old Work Switch & Outlet Box with EZ Mount Flanges and V-Clamps



EZ68QO EZ BOX is a 4-Gang, 68 cu. in., renovation application (old work) electrical switch or outlet box for residential or light commercial renovation projects when a 4-gang box is needed. EZ mount flanges, winged swing tabs and built in wire clamps make installation easy and cost effective.



8 V-clamps for EZ & secure wiring

#### 68 Cubic Inch

Part Number	Carton Quantity	Height	Width	Depth
EZ68QO	6	3.750	7.750	3.560

Dimensions are nominal

## EZ BOX® Shallow Old Work Switch & Outlet Box

### EZ BOX Shallow, 1-Gang, 8 cu. in., Old Work Switch and Outlet Box with EZ Mount Flanges



CANTEX EZ08SF is a 1-gang, 8 cubic inch, PVC switch or outlet box that is great for residential and light commercial remodeling (old work) applications where a shallow electrical box is needed. It features molded-on PVC flanges for easy mounting on a closed wall.

#### 8 Cubic Inch

Part Number	Carton Quantity	Height	Width	Depth
EZ08SF	25	3.550	2.375	1.250

Dimensions are nominal

2 hour fire-rated

# EZ BOX® Old Work Switch, Outlet and Ceiling Boxes

Technical drawings for each product can be found on the product pages at [www.cantexinc.com](http://www.cantexinc.com).

## EZ BOX® Old Work Low Voltage Switch & Outlet Boxes

### EZ BOX 1-Gang, 10 cu. in., Low Voltage, Old Work Switch and Outlet Box with EZ Mounting Flanges



EZ10SOLV is a 1-gang, old work, low voltage EZ BOX used for low voltage installations in renovation (old work) residential and light commercial applications. The backless design is great for the large or deep low-voltage wiring needed for communications and cable installations.

#### 10 Cubic Inch

Part Number	Carton Quantity	Height	Width	Depth
EZ10SOLV	25	3.000	2.250	1.580

Dimensions are nominal

## EZ BOX® Old Work Switch & Outlet Box Extender

### EZ BOX 1-Gang, Old Work Box Extender



EZSO-EXT EZ BOX PVC Old Work, 1-gang Box Extender is great for remodeling (old work) projects where boxes are set too deep in the wall and need extending. It can extend switch & outlet boxes up to 1-1/8 inches. It can be used with most standard 1-gang nonmetallic electrical switch and outlet boxes.

Part Number	Carton Quantity	Height	Width	Depth
EZSO-EXT	25	3.280	2.190	1.260

Dimensions are nominal



## EZ BOX® Shallow Old Work Ceiling Boxes

### EZ BOX Old Work, 18 cu. in., Ceiling Box with EZ Mount Tabs and Wire Clamps



EZ18CO EZ BOX is an 18 cu. in., ceiling box for (old work) electrical ceiling applications for residential or light commercial renovation (old work) projects. The EZ mount flanges, wing tabs and built in wire clamps make installation easy and cost effective. CANTEX ceiling boxes are constructed with durable polycarbonate for added resilience.

- Supports fixtures up to 6 lbs.
- Not suitable for ceiling fans.

#### 18 Cubic Inch

Part Number	Carton Quantity	Height	Width	Depth
EZ18CO	100	4.380	4.380	2.680

Dimensions are nominal



2 hour fire-rated

### EZ BOX Old Work, 18 cu. in., Ceiling Box with EZ Mount Tabs, Wire Clamps & Ground Lug



EZ18COG EZ BOX is an 18 cu. in., ceiling box with a ground lug for electrical ceiling applications for (old work) residential or light commercial renovation (old work) projects. The EZ mount flanges, wing tabs and built in wire clamps make installation easy and cost effective. CANTEX ceiling boxes are constructed with durable polycarbonate for added resilience.

- Supports fixtures up to 6 lbs.
- Not suitable for ceiling fans.

#### 18 Cubic Inch

Part Number	Carton Quantity	Height	Width	Depth
EZ18COG	100	4.380	4.380	2.680

Dimensions are nominal



2 hour fire-rated

# EZ BOX® Heavy Wall Switch, Outlet and Ceiling Boxes

## HEAVY WALL EZ BOXES

Our heavy wall EZ BOX line is ideal for new work applications where an even more durable PVC electrical switch, or outlet box is a desired. CANTEX heavy wall EZ BOXES have all of the same EZ installation features, but they are designed with a harder shell to make these durable PVC boxes even more resilient to flexing, breaking or changes in shape in various conditions.



Numerous Options

## EZ BOX® Heavy Wall Switch & Outlet Boxes



### EZ BOX Heavy Wall, 1-Gang, 22 cu. in., New Work, Nail-on Switch and Outlet Box with Knockouts

EZ22SN-HW is a 1-gang, 22 cu. in., heavy wall EZ BOX that is ideal for new work applications for residential and light commercial projects where an even more durable box is preferred. The harder shell is designed to resist flexing and hold its shape. EZ22SN-HW also features enhanced angled nails for easy mounting between studs and knockouts for EZ wiring.



2 hour fire-rated



4 knockouts for EZ wiring

### 22 Cubic Inch

Part Number	Carton Quantity	Height	Width	Depth
EZ22SN-HW	100	3.750	2.350	3.750

Dimensions are nominal



### EZ BOX 2-Gang, 35 cu. in., Heavy Wall, New Work, Nail-on Switch & Outlet Box with Wire Clamps

EZ35DN-HW is a 2-gang 35 cu. in. heavy wall residential EZ BOX that is ideal for new work applications for residential and light commercial projects where an even more durable box is preferred. The harder shell is designed to resist flexing and hold its shape. It features enhanced angled nails for easy mounting between studs 8 wire clamps for EZ secure wiring.



2 hour fire-rated



8 integral clamps for EZ & secure wiring

### 35 Cubic Inch

Part Number	Carton Quantity	Height	Width	Depth
EZ35DN-HW	48	3.850	4.170	3.590

Dimensions are nominal

### EZ BOX 3-Gang, 53 cu. in., Heavy Wall, New Work, Nail-on Switch and Outlet Box with Wire Clamps



EZ53TN-HW is a 3-gang, 53 cu. in., heavy wall EZ BOX that is ideal for new work applications for residential and light commercial projects where an even more durable box is preferred. The harder shell is designed to resist flexing and to hold its shape. It features enhanced, angled nails for easy mounting between studs and 12 integral wire clamps for EZ secure wiring.



2 hour fire-rated



12 integral clamps for EZ & secure wiring

### 53 Cubic Inch

Part Number	Carton Quantity	Height	Width	Depth
EZ53TN-HW	24	3.850	5.900	3.600

Dimensions are nominal

# EZ BOX® Heavy Wall Switch, Outlet and Ceiling Boxes

Technical drawings for each product can be found on the product pages at [www.cantexinc.com](http://www.cantexinc.com).

## EZ BOX® Heavy Wall Switch & Outlet Boxes

### EZ BOX Heavy Wall 4-Gang 64 cu. in. New Work Nail-on Switch and Outlet Box with Wire Clamps



2 hour fire-rated



EZ64QN-HW 4-gang 64 cu. in. heavy wall residential EZ BOX is ideal for new work applications for residential and light commercial projects where where an even more durable electrical box is preferred. This larger 64 cu. in. box is designed to hold most standard devices. The harder shell is designed to resist flexing and hold its shape. It also features enhanced angled nails and a bracket for easy mounting between studs and stronger wire clamps for extra secure wiring.



14 integral clamps for EZ & secure wiring

#### 64 Cubic Inch

Part Number	Carton Quantity	Height	Width	Depth
EZ64QN-HW	24	3.850	7.750	3.600

Dimensions are nominal

## EZ BOX® Two Gang Old Work Switch & Outlet Boxes

### EZ BOX Old Work, Heavy Wall, 2-Gang, 34 cu. in. Switch & Outlet Box with EZ Mount Flanges and Wire Clamps



EZ34DO-HW is the CANTEX 2-gang, 34 cu. in., heavy wall, electrical switch and outlet EZ BOX for renovation projects (old work). This heavy duty box with winged mounting tabs is perfect for residential and light commercial applications where a more durable, harder shell is desired to resist flexing.



8 integral clamps for EZ & secure wiring

#### 34 Cubic Inch

Part Number	Carton Quantity	Height	Width	Depth
EZ34DO-HW	18	3.850	4.200	3.500

Dimensions are nominal

## EZ BOX® Heavy Wall Ceiling Boxes

### EZ BOX Heavy Wall, 25 cu. in., New Work, Nail-on Ceiling Box with Wire Clamps



2 hour fire-rated

EZ25CN-HW is a 25 cu. in., nail-on, heavy wall ceiling box for new work (construction) applications for residential and light commercial projects. It is a heavy duty new construction (new work) ceiling box to use where a more durable electrical box is preferred. The harder shell is designed to resist flexing and hold its shape. It features enhanced angled nails for easy mounting between studs and 5 heavy-duty clamps for EZ secure wiring. CANTEX ceiling boxes are constructed with durable polycarbonate for added resilience.

- Supports fixtures up to 50 lbs.
- Not suitable for ceiling fans.

#### 25 Cubic Inch

Part Number	Carton Quantity	Height	Width	Depth
EZ25CN-HW	24	4.000	4.000	3.000

Dimensions are nominal

### EZ BOX Heavy Wall, 25 cu. in., New Work, Nail-on, Ceiling Box with Wire Clamps & Ground Lug



2 hour fire-rated

EZ25CNG-HW is a 25 cu. in., a nail-on, heavy duty, ceiling box for new work (construction) applications for residential and light commercial projects. It is a heavy duty new construction ceiling box to use where a more durable electrical box is preferred. The harder shell is designed to resist flexing and hold its shape. It features enhanced angled nails for easy mounting between studs and 5 stronger clamps for EZ secure wiring. EZ25CNG-HW also features a ground lug for EZ grounding when required. CANTEX ceiling boxes are constructed with durable polycarbonate for added resilience.

- Supports fixtures up to 50 lbs.
- Not suitable for ceiling fans.

#### 25 Cubic Inch

Part Number	Carton Quantity	Height	Width	Depth
EZ25CNG-HW	24	4.000	4.000	3.000

Dimensions are nominal

# EZ BOX<sup>®</sup> Heavy Wall Ceiling & Ceiling Fan Boxes

Technical drawings for each product can be found on the product pages at [www.cantexinc.com](http://www.cantexinc.com).

## EZ BOX<sup>®</sup> Heavy Wall Ceiling Box

### EZ BOX Heavy Wall, 25 cu. in., New Work Ceiling Box with Hanger Bar and Wire Clamps



EZ25CH-HW EZ BOX is a 25 cu. in, heavy wall, new work ceiling box with an attached bar hanger for extra support and adjustability. The heavy wall or harder shell of EZ25CH-HW is designed to use where a more durable electrical box is preferred. The harder shell is designed to resist flexing and to hold its shape. The adjustable bar hanger adjusts from 14" to 18" for added support and adaptability. It also features 5 integral wire clamps. CANTEX ceiling boxes are constructed with durable polycarbonate for added resilience.

- Supports fixtures up to 50 lbs.
- Not suitable for ceiling fans.

#### 25 Cubic Inch

Part Number	Carton Quantity	Height	Width	Depth
EZ25CH-HW	20	4.000	4.000	3.000

Dimensions are nominal



2 hour fire-rated

## EZ BOX Heavy Wall, 25 cu. in., New Work Ceiling Box with Hanger Bar, Wire Clamps & Ground Lug



EZ25CHG-HW EZ BOX is a 25 cu. in, heavy wall new work ceiling box with a ground lug and an attached bar hanger for extra support and adjustability. The heavy wall or harder shell of EZ25CHG-HW is designed to use where a more durable electrical box is preferred. The harder shell is designed to resist flexing and to hold its shape. The adjustable bar hanger adjusts from 14" to 18" for added support and adaptability. It also features 5 integral wire clamps and a ground lug for EZ grounding when required. CANTEX ceiling boxes are constructed with durable polycarbonate for added resilience.

- Supports fixtures up to 50 lbs.
- Not suitable for ceiling fans.

#### 25 Cubic Inch

Part Number	Carton Quantity	Height	Width	Depth
EZ25CHG-HW	20	4.000	4.000	3.000

Dimensions are nominal



2 hour fire-rated

## EZ BOX<sup>®</sup> Heavy Wall Ceiling Fan Box

### EZ BOX Heavy Wall, 25 cu. in., New Work, Nail-on Ceiling Fan Box with Wire Clamps and L-Bracket



EZ25CF-HW EZ BOX ceiling fan box is a nail-on, heavy duty ceiling fan box for new work (construction) applications for residential and light commercial projects. It features a harder shell that will not break or change shape in extreme conditions. It also features an attached metal nail-on L-bracket for easy installation and added support. It also has 5 increased strength wire clamps for secure wiring. CANTEX ceiling boxes are constructed with durable polycarbonate for added resilience.

- Supports fixtures up to 50 lbs.
- Supports ceiling fans up to 35 lbs.

#### 25 Cubic Inch

Part Number	Carton Quantity	Height	Width	Depth
EZ25CF-HW	24	4.000	4.000	3.000

Dimensions are nominal



2 hour fire-rated

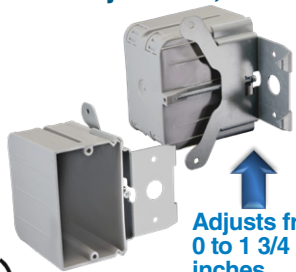
# EZ BOX<sup>®</sup> Adjustable Switch and Outlet Boxes

## CANTEX Adjustable EZ BOXES<sup>®</sup>

The design of CANTEX Adjustable EZ BOXES let you adjust the box to most wall thicknesses with a screwdriver. The patented brackets on the adjustable EZ BOXES are perfect for kitchen and bathroom applications where the type of wall finish often determines the necessary depth.

### EZ BOX<sup>®</sup> Adjustable Single Gang Box

#### EZ BOX Adjustable, 1-Gang, 21 cu. in., New Work and Retrofit Switch & Outlet Box with Adjustable Bracket



Adjusts from  
0 to 1 3/4  
inches.



2 hour fire-rated

EZ21SBZ-ADJ EZ BOX is the CANTEX 1-gang, adjustable, 21 cu. in., new construction, electrical switch and outlet box with an adjustable bracket that allows adjustment of depth to various drywall thicknesses and wall finishes. It is a perfect solution when a wall covering has already been installed. It is great for construction (new work) and retrofit applications. EZ21SBZ-ADJ is easy to mount to standard wood or metal studs and the adjustable metal bracket will adjust to almost any wall coverings.



knockouts for  
EZ wiring

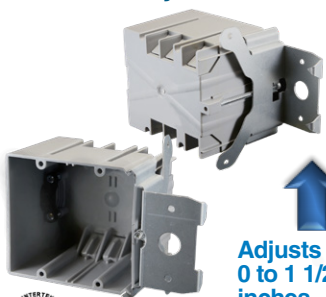
#### 21 Cubic Inch

Part Number	Carton Quantity	Height	Width	Depth
EZ21SBZ-ADJ	24	3.650	2.140	3.300

Dimensions are nominal

### EZ BOX<sup>®</sup> Adjustable Two Gang Box

#### EZ BOX Adjustable, 2-Gang, 34 cu. in., New Work & Retrofit Switch and Outlet Box with Adjustable Bracket



Adjusts from  
0 to 1 1/2  
inches.



2 hour fire-rated

EZ34DBZ-ADJ EZ BOX is the CANTEX 2-gang, adjustable, 34 cu. in., new construction, electrical switch and outlet box with an adjustable bracket that allows adjustment of depth to various drywall thicknesses and wall finishes. It is a perfect solution when a wall covering has already been installed. It is great for new construction (new work) and retrofit applications. EZ34DBZ-ADJ is easy to mount to standard wood or metal studs and the adjustable metal bracket will adjust to almost any wall coverings.

#### 34 Cubic Inch

Part Number	Carton Quantity	Height	Width	Depth
EZ34DBZ-ADJ	16	3.650	4.000	3.000

Dimensions are nominal



6 integral  
clamps for EZ &  
secure wiring



Integral clamp  
for 220-Volt  
Power

### NEW EZ BOX<sup>®</sup> Adjustable Single Gang Box

#### EZ BOX Adjustable, 1-Gang, 22 cu. in., New Work and Retrofit Switch & Outlet Box with Adjustable Bracket



Adjusts from  
0 to 1 3/4  
inches.



2 hour fire-rated

The NEW EZ22SBZ-ADJ EZ BOX features even better adjustable brackets with easily accessible screws inside the box. EZ22SBZ-ADJ is the CANTEX 1-gang, adjustable, 22 cu. in., new work, electrical switch & outlet box with an adjustable bracket that adjusts to various drywall thicknesses and wall finishes. It is a perfect solution when a wall covering has already been installed. It is great for construction and retrofit applications. It is easy to mount to standard wood or metal studs.

#### 22 Cubic Inch

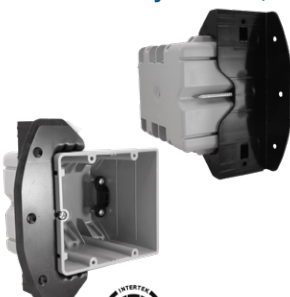
Part Number	Carton Quantity	Height	Width	Depth
EZ22SBZ-ADJ	24	3.655	2.250	3.600

Dimensions are nominal

Easy access  
adjustment screw  
inside the box.

### NEW EZ BOX<sup>®</sup> Adjustable 2-Gang Box

#### EZ BOX Adjustable, 2-Gang, 42 cu. in., New Work and Retrofit Switch & Outlet Box with Adjustable Bracket



2 hour fire-rated

The NEW EZ42DBZ-ADJ EZ BOX features even better adjustable brackets with easily accessible screws inside the box. EZ42DBZ-ADJ is the CANTEX 2-gang, adjustable, 42 cu. in., new work, electrical switch & outlet box with an adjustable bracket that adjusts to various drywall thicknesses and wall finishes. It is a perfect solution when a wall covering has already been installed. It is great for construction and retrofit applications. It is easy to mount to standard wood or metal studs.

#### 42 Cubic Inch

Part Number	Carton Quantity	Height	Width	Depth
EZ42DBZ-ADJ	50	5.640	4.070	3.600

Dimensions are nominal

Easy access  
adjustment screw  
inside the box.

# EZ BOX® Vapor Proof Switch, Outlet and Ceiling Boxes

## EZ BOX® Vapor Boxes

Our energy efficient EZ BOX Vapor Boxes are a great solution for meeting the needs of the energy efficiency requirements of modern homes. These new construction (new work) vapor-tight boxes feature offset flanges covered with foam gaskets and additional gaskets over cable entry points, creating a vapor tight seal. EZ BOX Vapor Boxes are engineered for easy, cost saving installation and constructed with resilient PVC for durability. They are great for exterior walls, garages, sunporches and any spaces that may be subject to unwanted air-flow. CANTEX Vapor Boxes meet NEMA OS-4 Certification for their air-tight barrier.



## EZ BOX® Switch and Outlet Vapor Boxes

### EZ BOX 1-Gang, 23 cu. in., New Work, Nail-on Vapor Proof Box with Wire Clamps and Gasket

EZ23SN-RG is a 1-gang, new work, vapor-proof EZ Box. It is an energy efficient electrical box for walls subject to unwanted air-flow. It eliminates air leaks with a solid drywall flange covered with a foam gasket and additional foam gaskets over 4 self-clamping cable entry clamps. These foam gaskets create a NEMA OS-4 Certified vapor-tight seal that prevents air from flowing through the box. The 23 cubic inch EZ Box is the largest 1-gang box in the industry. EZ23SN-RG also feature enhanced angled nails for EZ secure installation.



#### 23 Cubic Inch

Part Number	Carton Quantity	Height	Width	Depth
EZ23SN-RG	60	3.700	2.300	3.740

Dimensions are nominal

### EZ BOX 2-Gang, 36 cu. in., New Work, Nail-on, Vapor Proof Box with Wire Clamps and Gasket

EZ36DN-RG is a 2-gang, new work, vapor-proof EZ Box. It is an energy efficient electrical box for walls subject to unwanted air-flow. It eliminates air leaks with a solid drywall flange covered with a foam gasket and additional foam gaskets over 8 self-clamping cable entry v-clamps, creating a NEMA OS-4 Certified vapor-tight seal that prevents air from flowing through the box. The EZ36DN-RG also features angled nails for EZ secure installation.



#### 36 Cubic Inch

Part Number	Carton Quantity	Height	Width	Depth
EZ36DN-RG	48	3.600	4.000	3.300

Dimensions are nominal

### EZ BOX 3-Gang 54 cu. in., New Work, Nail-on, Vapor Proof Box with Wire Clamps and Gasket

EZ54TN-RG is a 3-gang new work, vapor-proof EZ Box. It is an energy efficient electrical box for walls subject to unwanted air-flow. It eliminates air leaks with a solid drywall flange covered with a foam gasket and additional foam gaskets over 12 self-clamping cable entry v-clamps, creating a NEMA OS-4 Certified vapor-tight seal that allows no air to flow through the box. The EZ36DN-RG also features angled nails for EZ installation.



#### 54 Cubic Inch

Part Number	Carton Quantity	Height	Width	Depth
EZ54TN-RG	24	3.600	5.800	3.300

Dimensions are nominal

## EZ BOX® Ceiling Vapor Box

### EZ BOX 26 cu. in., New Work, Nail-on, Vapor Proof Ceiling Box with Wire Clamps and Gasket

EZ26CN-RG is a new work, ceiling vapor proof EZ Box. It is an energy efficient electrical box. It eliminates air leaks with a solid drywall flange covered with a foam gasket and additional foam gaskets over 4 self-clamping cable entry v-clamps, creating a NEMA OS-4 Certified vapor-tight seal that allows no air to flow through the box. CANTEX ceiling boxes are constructed with durable polycarbonate for added resilience.



#### 26 Cubic Inch

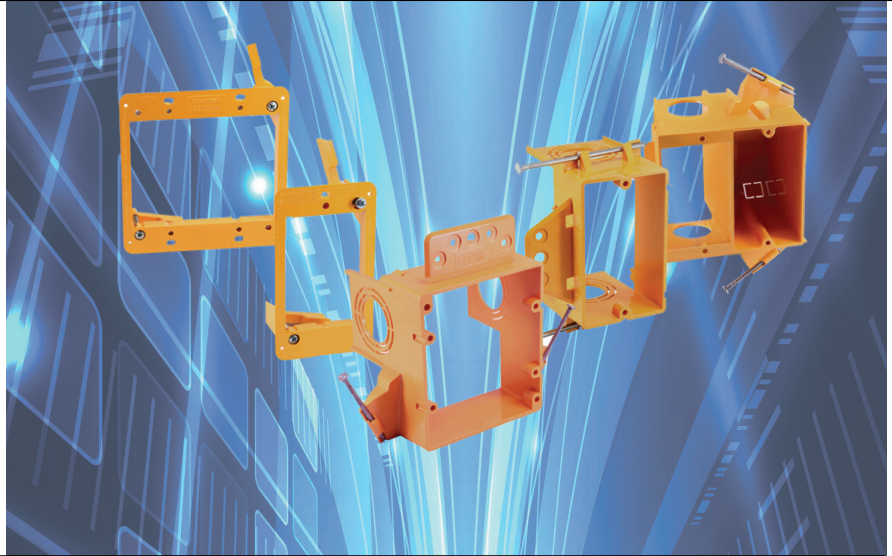
Part Number	Carton Quantity	Height	Width	Depth
EZ26CN-RG	48	3.960	3.960	2.740

Dimensions are nominal

# EZ BOX® Low Voltage Brackets

## EZ BOX® Low Voltage Brackets

CANTEX EZ BOX Low Voltage Brackets are designed specifically for the installation of low-voltage devices. CANTEX offers Low Voltage Bracket designs for both old (renovation) and new work (construction) applications. These backless boxes accommodate the space and bend-radius requirements of coaxial and communication cables. They also eliminate the need for metal plates, screws and lags. These low-voltage brackets are engineered for easy, cost saving installation and constructed with resilient PVC for durability. The orange



## EZ BOX® Old Work Low Voltage

### EZ BOX 1-Gang, Old Work, Low Voltage Bracket

EZLV1-OW is a 1-gang EZ BOX old Work, low voltage bracket used for low voltage installations in renovation (old work) applications. The backless design is great for the large or deep low-voltage wiring needed for communications and cable installations. It fits standard 1-gang faceplates.



- Wing tabs allow for easy, secure stud alignment & mounting
- Orange color easily identifies the low voltage application

#### 1-Gang Low Voltage Bracket

Part Number	Carton Quantity	Height	Width	Depth
EZLV1-OW	12	4.300	2.500	1.65

Dimensions are nominal



### EZ BOX 2-Gang, Old Work, Low Voltage Bracket

EZLV2-OW is a 2-gang EZ BOX old Work, low voltage bracket is used for low voltage installation in renovation (old work) applications. The backless design is great for the large or deep low-voltage wiring needed for communications and cable installations, and it fits standard 2-gang faceplates.



- Wing tabs allow for easy, secure stud alignment & mounting
- Orange color easily identifies the low voltage application

#### 2-Gang Low Voltage Bracket

Part Number	Carton Quantity	Height	Width	Depth
EZLV2-OW	6	4.300	4.310	1.650

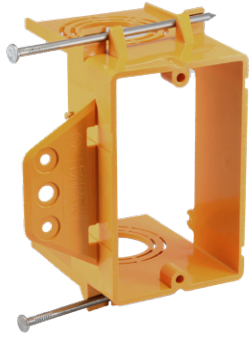
Dimensions are nominal

Technical drawings for each product can be found on the product pages at [www.cantexinc.com](http://www.cantexinc.com).

# EZ BOX® Low Voltage Brackets

Technical drawings for each product can be found on the product pages at [www.cantexinc.com](http://www.cantexinc.com).

## EZ BOX® New Work Low Voltage



### EZ BOX 1-Gang, New Work, Low Voltage Bracket

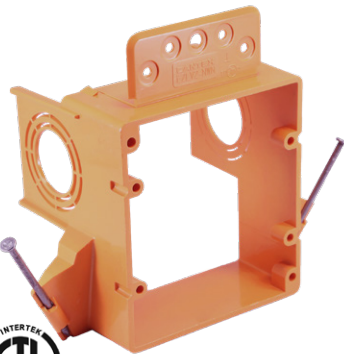
EZLV1-NWN EZ BOX is a 1-gang, new work, low voltage bracket with nails used for low voltage installations for new construction projects (new work) applications. The backless design is great for the large or deep low-voltage wiring needed for communications and cable installations, and it fits standard 1-gang faceplates. Round knockouts allow for multiple sizes of fittings.

- Molded bracket easily mounts on wood or steel studs
- Orange color easily identifies the low voltage application

#### 1-Gang Bracket with Nails

Part Number	Carton Quantity	Height	Width	Depth
EZLV1-NWN	24	3.730	2.360	3.150

Dimensions are nominal



### EZ BOX 2-Gang New Work Low Voltage Bracket

EZLV2-NWN EZ BOX is a 2-gang, new work, low voltage bracket used for low voltage installations for new construction projects (new work) applications. The backless design is great for the large or deep low-voltage wiring needed for communications and cable installations, and it fits standard 2-gang faceplates. Round knockouts allow for multiple sizes of fittings.

- Molded bracket easily mounts on wood or steel studs
- Orange color easily identifies the low voltage application

#### 2-Gang Bracket with Nails

Part Number	Carton Quantity	Height	Width	Depth
EZLV2-NWN	24	3.800	4.100	3.150

Dimensions are nominal

## EZ BOX® New Work Dual Voltage Bracket



### EZ BOX 2-Gang, New Work, Dual Voltage Bracket with Nails

EDV2B EZ BOX is a 2-gang, new work, dual voltage bracket used in construction (new work) applications where dual-voltage applications need to be side by side. The backless design is great for the large or deep low-voltage wiring needed for communications and cable installations, and it fits standard 2-gang faceplates. Four knockouts and two round opening for EZ installation.

- Molded bracket easily mounts on wood or steel studs
- Orange color easily identifies the low voltage application

#### 2-Gang Dual Voltage Box/Bracket

Part Number	Carton Quantity	Height	Width	Depth
EDV2B	16	3.800	4.000	3.670

Dimensions are nominal

## EZ BOX® Low Voltage Divider



### EZ BOX Low Voltage Divider for Use with Multi-gang Heavy Wall Boxes

EZLVDSW EZ BOX low voltage Divider is used with heavy wall PVC electrical boxes to allow the installation of a communication device in a closed back multi-gang deep box along with a standard switch or outlet device. EZLVDS is used with the following CANTEX multi-gang heavy wall EZ BOXES: EZ35DN-HW, EZ53TN-HW, and EZ64QN-HW.

- Transforms a multi-gang Heavy Wall box into a high and low voltage box
- Orange color easily identifies the low voltage application

#### Low Voltage Divider

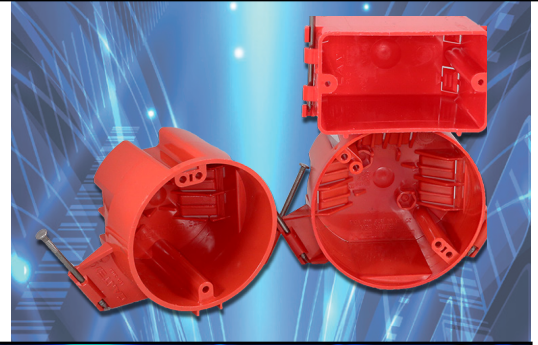
Part Number	Carton Quantity	Height	Width	Depth
EZLVDSW	50	3.400	3.400	.100

Dimensions are nominal

# EZ BOX® Red Alarm Boxes

## EZ BOX® Red Alarm Boxes

CANTEX Red Alarm EZ BOXES have the same enhanced installation features as our other boxes, but their bright red color makes them easily identifiable for fire safety applications. These designated red boxes are the best option for fire alarms or smoke detectors, since the bright red color makes them easy to identify as alarm or smoke detector boxes.



## EZ BOX® Single Gang Red Alarm Boxes

### EZ BOX 1-Gang, New Work, Nail-On, Red Alarm Boxes with Knockouts

EZ18SNA, EZ20SNA, and EZ23SNA are 1-gang new work alarm EZ BOXES that are ideal for residential and light commercial new construction (new work) applications for alarms and smoke detectors. These 1-gang box red alarm boxes feature the same enhanced installation features as our other boxes, but their bright red color makes them easily identifiable.



2 hour fire-rated



4 knockouts for EZ wiring

#### 20.3 Cubic Inch

Part Number	Carton Quantity	Height	Width	Depth
EZ20SNA	100	3.700	2.250	3.125

Dimensions are nominal

#### 18 Cubic Inch

Part Number	Carton Quantity	Height	Width	Depth
EZ18SNA	100	3.700	2.250	2.875

Dimensions are nominal

#### 23 Cubic Inch

Part Number	Carton Quantity	Height	Width	Depth
EZ23SNA	100	3.700	2.188	3.500

Dimensions are nominal

## EZ BOX® Red Alarm Ceiling Boxes

### EZ BOX 18 cu. in., New Work, Nail-on, Red Alarm Ceiling Box with Wire Clamps

EZ18CNA EZ BOX is an 18 cu. in. new work ceiling box for residential and light commercial new construction (new work) applications for alarms and smoke detectors. This red alarm designated ceiling box features the same enhanced installation features as our other ceiling boxes, but the bright red color makes it easily identifiable. CANTEX ceiling boxes are constructed with durable polycarbonate for added resilience.



2 hour fire-rated

- 4 wire clamps for EZ wiring.
- Supports fixtures up to 50 lbs.

#### 18 Cubic Inch

Part Number	Carton Quantity	Height	Width	Depth
EZ18CNA	75	3.500	3.500	2.680

Dimensions are nominal

### EZ BOX 20 cu. in., New Work, Nail-on, Red Alarm Ceiling Box with Wire Clamps

EZ20CNA EZ BOX is an 20 cu. in., new work ceiling box for residential and light commercial new construction (new work) applications for alarms and smoke detectors. This red alarm designated ceiling box features the same enhanced installation features as our other ceiling boxes, but the bright red color makes it easily identifiable. CANTEX ceiling boxes are constructed with durable polycarbonate for added resilience.



2 hour fire-rated

- 6 wire clamps for EZ wiring.
- Supports fixtures up to 50 lbs.

#### 20 Cubic Inch

Part Number	Carton Quantity	Height	Width	Depth
EZ20CNA	75	4.000	4.000	2.300

Dimensions are nominal

## EZ BOX® ENT (Electrical Non-Metallic Tubing) Boxes

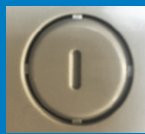
Our EZ BOX ENT boxes are designed for use with our other light, flexible and strong ENT (Electrical Non-Metallic Tubing) products. With specifically designed concentric knockouts, they are perfect for creating ENT electrical systems with ENT Tubing and ENT fittings in walls, floors and non-plenum ceiling spaces. All our PVC ENT products are made of resilient non-conductive PVC that won't corrode or conduct electricity and can be used with ENT snap-in fittings or standard Schedule 40 fittings.



## EZ BOX® ENT Switch and Outlet Boxes

### EZ BOX ENT 1-Gang, 16 cu. in. Switch or Outlet Box

EN16SB is a 1-Gang, 16 cu. in., ENT switch or outlet box designed for use with electrical nonmetallic tubing (ENT) and standard electrical devices and switches in residential and light commercial applications. EN16SB features molded flanges and three 1/2 inch knockouts for EZ installation and multiple connections.



Three 1/2 inch knockouts for EZ installation of ENT fittings.

#### 16 Cubic Inch 1-Gang ENT Box

Part Number	Carton Quantity	Height	Width	Depth
EN16SB	25	3.000	2.260	2.970

Dimensions are nominal



2 hour fire-rated

### EZ BOX ENT 4 Inch Square ENT Switch or Outlet Box

EN20DB is a 4 inch Square, 20 cu. in., ENT switch or outlet box designed for use with electrical nonmetallic tubing (ENT). 4" square boxes provide maximum volume for multiple conductors and connectors running in multiple directions. EN20DB features molded flanges and 7 knockouts for EZ installation and multiple connections.



A combination of seven 1/2 & 3/4 inch knockouts for connecting ENT fittings.

#### 20 Cubic Inch 4" Square ENT Box

Part Number	Carton Quantity	Height	Width	Depth
EN20DB	100	4.000	4.000	1.380

Dimensions are nominal



2 hour fire-rated

### EZ BOX 1-Gang, 22 cu. in., ENT Electrical Box

EZ BOX EN22SB is a 1-gang ENT box designed for use with electrical non-metallic tubing (ENT). This 22 cu. in. box is the largest capacity ENT 1-gang box available today. It features ample room for all necessary wiring. This box includes 1/2, 3/4 and 1 inch concentric knockouts to fit multiple sizes of ENT tubing and fittings. It also features molded flanges and a molded bracket for EZ installation to wood or steel studs.



Four Concentric knockouts for use with multiple sizes of ENT fittings.

#### 22 Cubic Inch 1-Gang ENT Box

Part Number	Carton Quantity	Height	Width	Depth
EN22SB	25	3.690	2.250	3.250

Dimensions are nominal



2 hour fire-rated

# EZ BOX® ENT & Handy Boxes

Technical drawings for each product can be found on the product pages at [www.cantexinc.com](http://www.cantexinc.com).

## EZ BOX® ENT Switch and Outlet Boxes



### EZ BOX 2-Gang, 38 cu. in. ENT Electrical Box

EZ BOX EN38DB is a 2-Gang ENT box designed for use with electrical non-metallic tubing (ENT). It features ample room for all necessary wiring and 1/2, 3/4 and 1 inch concentric knockouts to fit multiple sizes of ENT tubing and fittings. It also features molded flanges and a molded bracket for EZ installation to wood or steel studs.



**6 Concentric knockouts for use with multiple sizes of ENT fittings**

### 22 Cubic Inch 1-Gang ENT Box

Part Number	Carton Quantity	Height	Width	Depth
EN38DB	25	3.700	3.960	3.500

Dimensions are nominal



2 hour fire-rated

## EZ BOX® ENT Ceiling Boxes



### EZ BOX 20 cu. in., Octagon ENT Ceiling Box

EN20C is a 20 cu. in., Octagon ENT Ceiling Box for residential and light commercial ceiling fixture applications. EN20C features six knockouts, including a combination of 1/2 inch and 3/4 inch knockouts for multiple wiring options. CANTEX ceiling boxes are constructed with durable polycarbonate for added resilience.

- Supports fixtures up to 50 lbs.
- Not suitable for ceiling fans.



**Six knockouts, including a combination of 1/2 & 3/4 inch knockouts for ENT fittings.**

### 20 Cubic Inch ENT Ceiling Box

Part Number	Carton Quantity	Height	Width	Depth
EN20C	50	3.670	3.670	2.200

Dimensions are nominal



2 hour fire-rated

## EZ BOX® Handy Box & Covers

### EZ BOX Handy 1-Gang, Multi-Purpose Switch & Outlet Box with Wire Clamps and Knockouts



EZ12SO EZ BOX is a multi-purpose electrical switch and outlet box for residential or light commercial electrical installations, including switch, outlet, toggle switch and ground fault circuit interrupters. It features knockouts and 2 clamps for wiring and mounting versatility.

- Multi-Purpose Electrical Switch/Outlet Box
- Four cover styles available
- Easy to install
- Meets NEMA specifications

### 12 Cubic Inch Single Gang Box

Part Number	Carton Quantity	Height	Width	Depth
EZ12SO	50	4.000	2.150	1.930

Dimensions are nominal



**2 integral clamps & knockouts for secure wiring options**



# EZ BOX® Handy Box & Ceiling Outlet Covers

## EZ BOX® Handy Cover Options



Blank Cover

### EZ BOX 1-Gang Handy Box Blank Cover

The EZSL-BLANK 1-gang blank cover is a sleek, yet durable wall plate used to close off an electrical box not in use. EZSL-Blank features a 1/2 in. knockout for access into the box without removing the entire cover. This sleek blank cover is designed for use with CANTEX EZ12SO Handy Wall Multi-Purpose Residential Electrical Switch and Outlet Box for residential and light commercial applications. Comes with stainless steel screws for installation.



Part Number	Carton Quantity	Height	Width	Depth
EZSL-BLANK	25	4.290	2.360	.250

Dimensions are nominal



Switch Cover

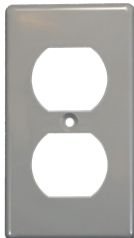
### EZ BOX 1-Gang Handy Box Switch Cover

The EZSL-TGL 1-gang Handy Box wall switch cover creates a sleek, yet durable wall plate for residential and light commercial applications. EZSL-TGL is designed for use with the CANTEX EZ12SO Handy Wall Multi-Purpose Residential Electrical Switch and Outlet Box for residential and light commercial applications. Comes with stainless steel screws for installation.



Part Number	Carton Quantity	Height	Width	Depth
EZSL-TGL	25	4.290	2.360	.250

Dimensions are nominal



Duplex Cover

### EZ BOX 1-Gang Handy Box Duplex Cover

The EZSL-DPLX 1-gang Handy Box duplex cover creates a sleek, yet durable wall plate for residential and light commercial outlet applications. EZSL-DPLX is designed for use with the CANTEX EZ12SO Handy Wall Multi-Purpose Electrical Switch and Outlet Box for residential and light commercial applications. Comes with stainless steel screws for installation.



Part Number	Carton Quantity	Height	Width	Depth
EZSL-DPLX	25	4.290	2.360	.250

Dimensions are nominal



GFCI Receptacle Cover

### EZ BOX 1-Gang Handy Box GFCI Receptacle Cover

The EZSL-GFCI 1-gang GFCI cover creates a sleek, yet durable wall plate for residential and light commercial ground fault circuit interrupter applications. EZSL-GFCI is designed for use with CANTEX EZ12SO Handy Wall Multi-Purpose Residential Electrical Switch and Outlet Box for residential and light commercial applications. Comes with stainless steel screws for installation.



Part Number	Carton Quantity	Height	Width	Depth
EZSL-GFCI	25	4.290	2.360	.250

Dimensions are nominal

Technical drawings for each product can be found on the product pages at [www.cantexinc.com](http://www.cantexinc.com).

## EZ BOX® Round Ceiling Outlet Cover



### EZ BOX 4 in. Round Ceiling Outlet Cover

EZYKL-WH is a 4" round white decorative cover, perfect for concealing unused ceiling boxes with a clean, finished appearance. Made from durable HDPE, it resists rust and corrosion, ensuring long-lasting performance. Installation is quick and hassle-free. Two white mounting screws and two white plugs come with the cover for a secure and polished finish. It's ideal for hiding unused 3 1/2- or 4-inch round or octagonal ceiling boxes and surrounding drywall cutouts when a ceiling box fixture is not in use.

#### Round Ceiling Outlet Cover

Part Number	Carton Quantity	Height	Width	Depth
EZYKL-WH	12	5.000	5.000	.340

Dimensions are nominal

### CREATES A FINISHED LOOK



Conceals unused ceiling boxes with a clean, finished appearance.

# EZ BOX® Accessories

Technical drawings for each product can be found on the product pages at [www.cantexinc.com](http://www.cantexinc.com).

## EZ BOX® Non-metallic Round Plaster Ring

### EZ BOX Round EZ BOX Plaster Ring

EZ03YC and EZ04YC EZ BOX round plaster rings (also called a mud rings) provide riser or extensions for any CANTEX 4 inch ceiling boxes or CANTEX ENT ceiling box. CANTEX round plaster rings are constructed with durable polycarbonate for added resilience.



- Works with CANTEX 4" ceiling boxes & ENT ceiling boxes
- Supports fixtures up to 50 lbs.



2 hour fire-rated

### 4" Round Plaster Ring

Part Number	Carton Quantity	Height	Width	Depth	Rise
EZ03YC	100	4.000	4.000	.500	1/2
EZ04YC	100	4.000	4.000	.625	5/8

Dimensions are nominal

## EZ BOX® Electrical Switch and Outlet Box Cover Risers

### EZ BOX 1-Gang Electrical Box Cover Risers

EZ03SXA, EZ04ES, EZ05ES, EZ06ES and EZ08ES are 1-gang cover risers or extensions for any CANTEX 4" square EZ BOX, 4" square ENT box, or 2-gang ENT box. These risers easily reduce CANTEX 4" square as well as 2-gang ENT boxes to single-gang usage. The risers feature 4 notches for easy installation of screws to secure the riser.



4 strategically placed notches for screws make installation easy



2 hour fire-rated

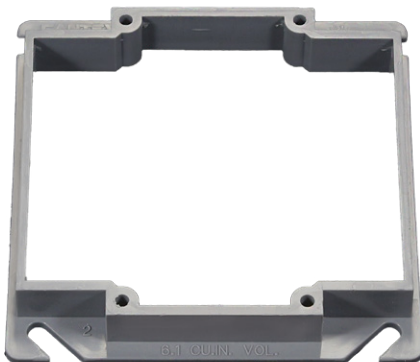
### 1-Gang Box Cover Risers

Part Number	Carton Quantity	Height	Width	Depth	Rise
EZ03SXA	100	4.000	4.000	.500	1/2
EZ04ES	50	4.000	4.000	.625	5/8
EZ06ES	40	4.000	4.000	1.000	1
EZ08ES	30	4.000	4.000	1.250	1 1/4

Dimensions are nominal

### EZ BOX 2-Gang Electrical Box Cover Risers

EZ06DXA, EZ08ED, and EZ09ED EZ BOX are 2-gang cover risers that provide risers or extensions for any CANTEX 4" square EZ BOX, 4" square ENT box, or 2-gang ENT box. These risers have 4 notches for easy installation of screws to secure the risers. They work with most standard 2-gang PVC boxes.



4 strategically placed notches for screws make installation easy



2 hour fire-rated

### 2-Gang Box Cover Risers

Part Number	Carton Quantity	Height	Width	Depth	Rise
EZ06DXA	75	4.000	4.000	.500	1/2
EZ08ED	50	4.000	4.000	.625	5/8
EZ09ED	50	4.000	4.000	.850	3/4

Dimensions are nominal

Technical drawings for each product can be found on the product pages at [www.cantexinc.com](http://www.cantexinc.com).

## EZ BOX® Round Blank Cover



2 hour fire-rated

### EZ BOX 4 in. Round EZ BOX Blank Cover

EZYKL is a 4 inch round box cover that is ideal for covering CANTEX 4" ceiling boxes or CANTEX ENT ceiling boxes that are not in use. This durable PVC cover will not rust or corrode and the keyhole and notch design makes installation fast, easy and secure. EZYKL works with any CANTEX 4" ceiling box or CANTEX ENT ceiling box.



Keyhole screw mounting design keeps cover secure

### 4" Round Blank Cover

Part Number	Carton Quantity	Height	Width	Depth
EZYKL	100	4.000	4.000	.1000

Dimensions are nominal



2 hour fire-rated

### EZ BOX 4 in. Round EZ BOX Blank Cover with 1/2 Knockout

EZYL1 is a 4 inch round box cover with a knockout. It is ideal for covering CANTEX 4" ceiling boxes or CANTEX ENT ceiling boxes that are not in use, and the knockout provides easy access without having to remove the cover. This durable PVC cover will not rust or corrode and the keyhole and notch design makes installation fast, easy and secure. EZYL1 works with any CANTEX 4" ceiling box or CANTEX ENT ceiling box.



Keyhole screw mounting design keeps cover secure

### 4" Round Blank Cover with Knockout

Part Number	Carton Quantity	Height	Width	Depth
EZYL1	100	4.000	4.000	.1000

Dimensions are nominal

## EZ BOX® 4" Square Switch and Outlet Box Cover



2 hour fire-rated

### EZ BOX 2-Gang, 4 in. Square Blank Cover

EZXKL is a 2-gang blank box cover that is ideal for covering any 4" square EZ BOX, 4" square ENT box, or 2-gang ENT box that is not in use. This durable PVC cover will not rust or corrode and the keyhole and notch design makes installation fast, easy and secure. It works with all CANTEX 4" square EZ BOXES, 4" square ENT boxes, and 2-gang ENT boxes.

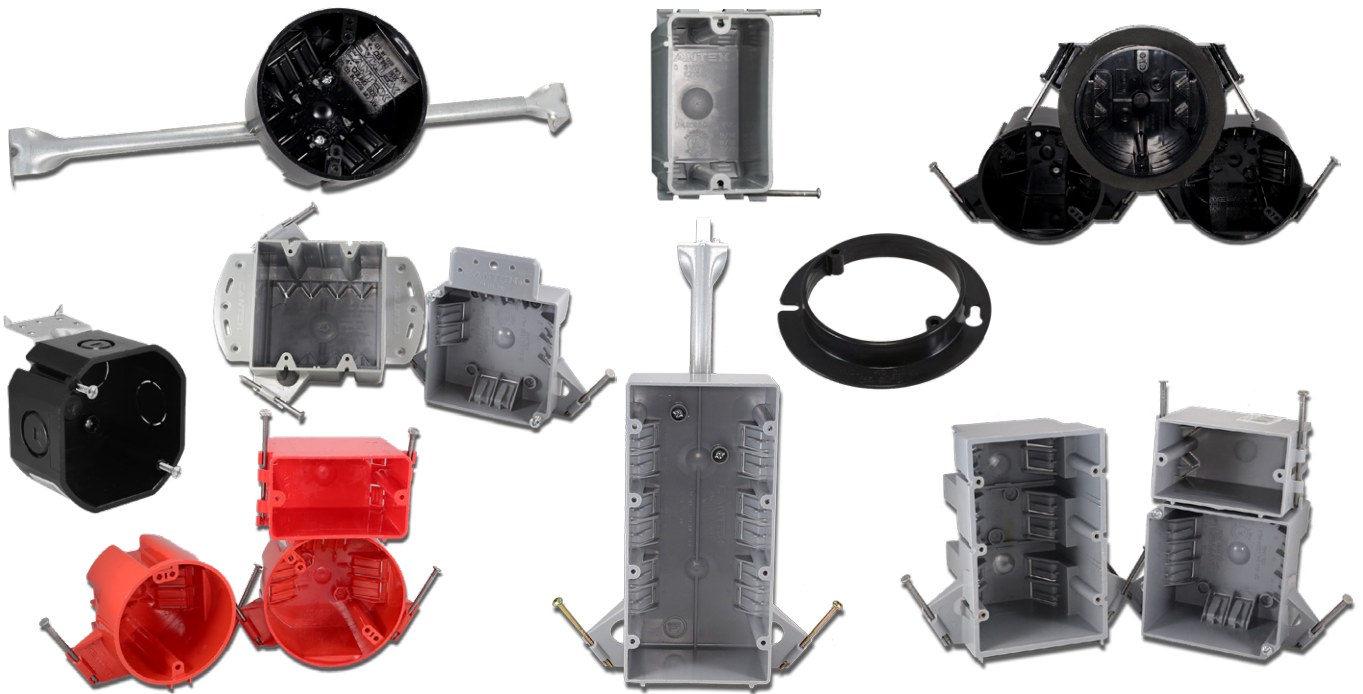


Keyhole screw mounting design keeps cover secure

### 4" 2-Gang Blank Cover

Part Number	Carton Quantity	Height	Width	Depth
EZXKL	100	4.000	4.000	.1000

Dimensions are nominal



# CANTEX EZ BOX® CROSS REFERENCE GUIDE



# CANTEX EZ BOX® Cross Reference Guide

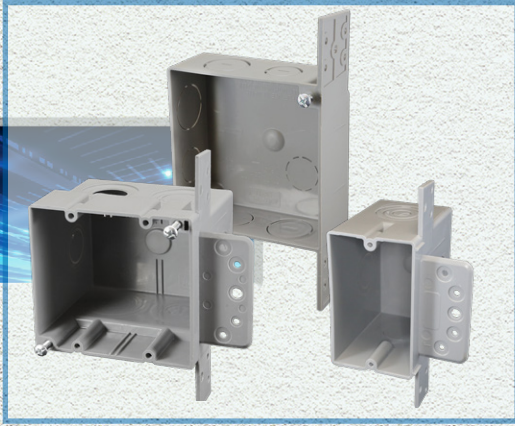
CANTEX PART NO	DESCRIPTION	T&B / CAR-LON PART NO.	T&B / BOWERS PART NO.	T&B / CHALLENGER PART NO.	ALLIED PART NO.	RACO PART NO.	SLATER (P&S) PART NO.	THEPITT PART NO.
EDV2B	2 G NW DUAL VOLTAGE BRACKET W/NAIIS	SC200DV						
EN16SB	16 CU IN 1 G NW ENT BOX W/1/2" CONCENTRIC KO'S	A58881D						
EN18SB	18 CUBIC INCH SINGLE GANG ENT BOX	A58381D/				7050		
EN20CB	20.3 CUBIC INCH ENT CEILING BOX	A615DE				7052		
EN20CB	20.5 CU IN 4" ENT OCTAGON NW CEILING BOX 1/2 - 3/4 KO	A615DE						
EN20CBL	20.5 CU IN 4" ENT OCTAGON NW CEILING BOX 1/2 - 3/4 KO WITH BRACKET	A615DL						
EN20CH	20.3 CUBIC INCH ENT CEILING BOX WITH HANGER	A615DH				7051		
EN20DB	4" SQUARE NW 20 CU IN OUTLET BOX W/ 1/2 & 3/4 CONCENTRIC KO'S	A521DE						
EN22DB	22.5 CUBIC INCH 2 GANG ENT BOX	A4521DE				7053		
EN22SB	22 CU IN 1 G NW ENT BOX W/1" CONCENTRIC KO'S	A122						
EN31DB	31 CUBIC INCH 2 GANG ENT BOX	A5217DE				7054		
EN38DB	38 CU IN 4" SQUARE NW ENT OUTLET BOX W/CONCENTRIC KO'S	A238						
EZ03SXA	4" SQUARE SINGLE GANG SQUARE COVER W/1/2" RISER	A410	4S-1G	*4042-12		7772	RC1	1010
EZ03YC	4" ROUND PLASTER RING WITH 1/2" RISER	A471						
EZ04ES	4" SQUARE SINGLE GANG COVER WITH 5/8" RISER	A411				7071		
EZ04YC	4" ROUND PLASTER RING WITH 5/8" RISER	A472					4SP2-31R	
EZ06ES	4" SQUARE SINGLE GANG COVER WITH 3/4" RISER	A412						
EZ06DXA	4" SQUARE 2 GANG COVER WITH 1/4" RISER							
EZ06DXA	4" SQUARE 2 GANG SQUARE COVER W/1/2" RISER	A420	4S-2G	*4022-12		7778		
EZ06ES	4" SQUARE SINGLE GANG COVER WITH 1" RISER	A413						
EZ08ED	4" SQUARE 2 GANG COVER WITH 5/8" RISER	A421				7076		
EZ08ES	4" SQUARE SINGLE GANG COVER WITH 1 1/4" RISER	A414						
EZ08SB	8 CUBIC INCH BRACKETED SHALLOW BOX	B108B						
EZ08SF	8 CUBIC INCH FLANGED SHALLOW BOX	B108R						
EZ08ED	4" SQUARE 2 GANG COVER WITH 3/4" RISER	A422					4SP1-214	
EZ12SO	12 CU IN 1 GANG PVC HANDY BOX	B112HB			9318			
EZ14SO	14 CUBIC INCH SINGLE GANG OLD WORK BOX	B114R	114-OW	6070-4	9363-EW	7887	S1-18-W	1690
EZ16SN	16 CUBIC INCH SINGLE GANG NAIL-ON BOX	B116A	116N	SN-16	1085-N	7355	P1-16-F	
EZ18CN	18 CUBIC INCH CEILING BOX 3/0 NAIL-ON	B518A	3R-16N	3090-N	9355-NC2	7118	C1-18-RAC	16310
EZ18CN	18 CUBIC INCH CEILING BOX 3/0 NAIL-ON W/GRD LUG	B518P	3R-16NGP	3090-N-40	9355-NGC2	7918	C1-19-RGAC	16311
EZ18CO	18 CUBIC INCH OLD WORK CEILING BOX	B618R						
EZ18COG	18 CUBIC INCH OLD WORK CEILING BOX W/GRD LUG							
EZ18SN	18 CUBIC INCH SINGLE GANG NAIL-ON BOX	B118A	118N	SN-18	1086-N	7302	P1-18-F	1800
EZ18SO-HW	18 CU IN 1 G OW HAFD BOX W/MOUNTING EARS & SWING CLAMPS	BH118R			9368-EW			
EZSL-GFCI	HANDY BOX COVER - GFCI	HB1GF						
EZSL-TGL	HANDY BOX COVER - TOGGLE SWITCH	HB1SW			9319			
EZXKL	4" SQUARE 2 GANG BLANK COVER	A400	4S-B	*4041/45PB	9344			
EZYKL	4" ROUND BLANK COVER	E460						
EZY11	4" ROUND BLANK COVER WITH KNOCKOUT	A470D				7081		

# CANTEX EZ BOX<sup>®</sup> Cross Reference Guide

CANTEX PART NO	DESCRIPTION	T&B / CARLON PART NO.	T&B / BOWERS PART NO.	T&B / CHALLENGER PART NO.	ALLIED PART NO.	RACO PART NO.	SLATER (P&S) PART NO.	THEPITT PART NO.
EZ18XN	18 CUBIC INCH 4 SQUARE SHALLOW NAIL-ON BOX	B418A		SN-418	9340-C2	7218	S4421RAC	1900
EZ20CH	20 CUBIC INCH CEILING BOX W/1/4" - 23 1/2" HANGER	B620H	4R-20BH	4070-94	9350-24C2	7335	S1-20-HAC	16117/ 16122
EZ20CHG	20 CUBIC INCH CEILING BOX W/1/4" - 23 1/2" HANGER WITH GROUND LUG	B620HG	4R-20BHGP	4070-94-40	9350-24GC2	7335	S1-20-HGAC	16118/ 16123
EZ20CN	20 CUBIC INCH CEILING BOX 4/0 NAIL-ON	B520A	4R-20N	4170-C	9351-NC2	7163	A1-20-RAC	
EZ20CNG	20 CUBIC INCH CEILING BOX 4/0 NAIL ON W/GRD LUG	B520P	4R-20NGP	4170-C-40	9351-NGC2	7823	S1-20-RGAC	16110
EZ20CZ	20 CU IN 3 OR 4" NW CEILING BOX DEEP RATED 35 LB FAN OR 50 LB FIXTURE	B720R-SHK			9350-KFR			
EZ20SN	20 CUBIC INCH SINGLE GANG NAIL-ON BOX	B120A	120N	1050	1088-N	7820		
EZ15BZ-ADJ	21 CU IN 1 G NW ADJUSTABLE BOX	B121ADJ			SB-1			
EZ22SN-HW	22 CU IN 1 G NW HARD BOX W/NAILS	BH122A-LPC			1099-N			
EZ23SN	23 CUBIC INCH SINGLE GANG NAIL-ON BOX	B122A						
EZ23SN-RG	22.5 CU IN 1 G NW VAPOR TIGHT W/NAILS	FN-23			1099-NV			
EZ25CF-HW	25 CU IN 3 OR 4" NW HARD ROUND CEILING BOX 35 FAN OR 50 FIXTURE W/L BRACKET	BH525L			9351-NFR/NKFR			
EZ25CHG-HW	25 CU IN 3 OR 4" ROUND NW CEILING BOX W/HANG BAR/GRD LUG	BH525HP			9350-1616GK			
EZ25CH-HW	25 CU IN 3 OR 4" ROUND NW CEILING BOX W/HANG BAR	BH525H			9350 - 1616K			
EZ25CNG-HW	25 CU IN 3 OR 4" NW HARD ROUND CEILING BOX W/GRD LUG 50 FIXTURE	BH525P						
EZ25CN-HW	25 CU IN 3 OR 4" NW HARD ROUND CEILING BOX W/NAILS RATED 50 LB FIXTURE	BH525A-LPC			9351-N			
EZ25DO	25 CUBIC INCH TWO GANG OLD WORK BOX	B225R		6062-4	9312-BMK		S2-32-W	3490
EZ26CN-RG	26 CU IN NW CEILING BOX VAPOR TIGHT W/NAILS V CLAMPS	FN-426-C-V			9351-NKV			
EZ28DN	32 CUBIC INCH TWO GANG NAIL-ON BOX	B232A	234N	SN-232	2300-NC4	7835	P2-35-RAC	3600
EZ28XN	32 CUBIC INCH 4 SQUARE DEEP NAIL-ON BOX	B432A	45-32N	4000-N	9343-NC2	7234	S44-35-RAC	
EZ34BZ-ADJ	34 CU IN 2 G NW ADJUSTABLE BOX	B234ADJ			SB-2			
EZ34DO-HW	34 CU IN 2 G OW HARD BOX W/MOUNTING EARS & SWING CLAMPS	BH234R			9329-EWEWK			
EZ35DN-HW	35 CU IN 2 G NW HARD BOX W/NAILS	BH235A			2300-NNK			
EZ36DN-RG	36 CU IN 2 NW G VAPOR TIGHT W/NAILS	FN-236-V			2302-NKV			
EZ41TN	44 CUBIC INCH THREE GANG NAIL-ON BOX	B344A	345N	1043-C	3300-NC6	7846	S3-54-RAC	4600
EZ33TN-HW	53 CU IN 3 G NW HARD BOX W/ NAILS	BH353A			3303-NNK			
EZ34TN-RG	54 CU IN 3 G NW VAPOR TIGHT W/NAILS	FN-354-V			3303-NKV			
EZ55QNB	55 CUBIC INCH FOUR GANG NAIL-ON & BRACKET	B455A	4605B	7074-BH	3300-NBC4	7644	S466-RAC	6100
EZ55TO	55CU IN OW W/MOUNTING EARS & SWING CLAMPS	B355R			9313-EWK			
EZ64QN-HW	64 CU IN 4 G NW HARD BOX W/NAILS AND SUPPORT FLANGE	BH464A			4304-NNR			
EZ88QN	68 CU IN OW W/MOUNTING EARS & SWING CLAMPS	B468R			9314-EWK			
EZLV1-NWN	1 G NW LOW VOLTAGE BRACKET W/NAILS	SC100A						
EZLV1-OW	1 G OW LOW VOLTAGE BRACKET	SC100RR						
EZLV2-NWN	2 G NW LOW VOLTAGE BRACKET W/NAILS	SC200A						
EZLV2-OW	2 G OW LOW VOLTAGE BOX	SC200RR						
EZLVD-SW	NW LOW VOLTAGE DIVIDER PLATE	SCDIV						
EZLVB	1 G NW OR OW ADD ON BRACKET	SC100SC						
EZS9-EXT	1 G OW BOX EXTENDER	B1EXTB						
EZSL-BLANK	HANDY BOX BLANK COVER	HB1BL			9322			
EZSL-DPLX	HANDY BOX COVER - DUPLEX RECEPTACLE	HB1DP			9320			

## Why CANTEX?

- Over 70 years of manufacturing American-made electrical products.
- Proven track record for quality and service.
- Nationwide distribution system for fast delivery time.



# CANTEX®

Your Single-Source for ALL  
PVC Electrical Products

Would you like to learn more  
about our quality non-metallic  
EZ BOXES?

Contact your CANTEX sales agent  
or electrical distributor.

If you don't know who to contact,  
visit [www.cantexinc.com](http://www.cantexinc.com) and use  
our agent search tool or  
call CANTEX at **817-215-7000**.

