

Table of Contents



Adjustable Switch & Outlet Boxes 4



Vapor Proof Boxes 5



Heavy Wall Switch/Outlet and Ceiling Boxes 6



Low Voltage Brackets..... 7



Handy Wall Boxes & Covers..... 8



Ceiling Fan Box 8



ENT Switch/Outlet and Ceiling Boxes 9



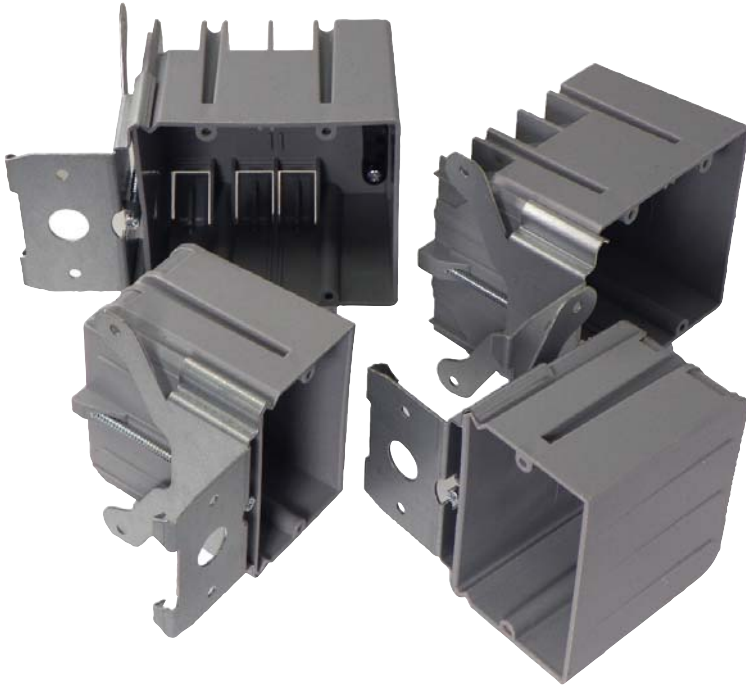
Expanded Line of Old Work Switch/Outlet Boxes 10



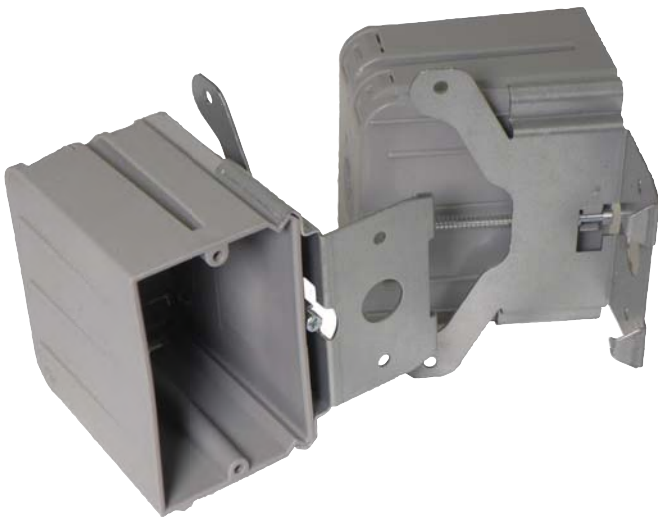
Box Extender 10

Cross Reference 11

ADJUSTABLE SWITCH & OUTLET WALL BOXES

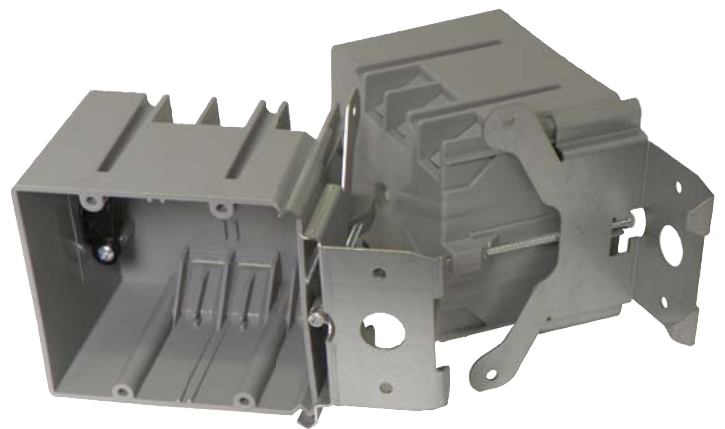


- Box is nonmetallic
- Bracket is adjustable to fit most wall thickness
- Easy to install
- Easy to adjust
- Available in one and two gang
- Meets NEMA specifications



21 CUBIC INCH SINGLE GANG BOX

Part Number	Carton Quantity
EZ21SBZ-ADJ	24



34 CUBIC INCH TWO GANG BOX

Part Number	Carton Quantity
EZ34DBZ-ADJ	16

VAPOR PROOF SWITCH, OUTLET AND CEILING BOXES

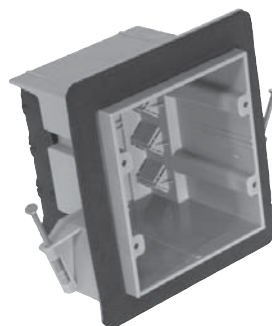


- Energy efficient electrical boxes for exterior walls eliminates air leaks
- Available in one, two and three gang switch and outlet boxes and the round ceiling box
- Meets NEMA specifications



**23 CUBIC INCH
SINGLE GANG BOX**

Part Number	Carton Quantity
EZ23SN-RG	50



**36 CUBIC INCH
TWO GANG BOX**

Part Number	Carton Quantity
EZ36DN-RG	50



**54 CUBIC INCH
THREE GANG BOX**

Part Number	Carton Quantity
EZ54TN-RG	20



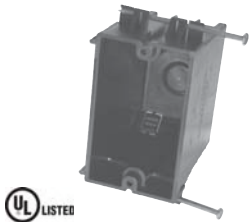
**26 CUBIC INCH
CEILING BOX**
Suitable for fixture support only
50 lbs. maximum

Part Number	Carton Quantity
EZ26CN-RG	50

HEAVY WALL SWITCH/OUTLET & CEILING BOXES

- Heavier duty for extreme environments
- Resists flexing
- Holds their shape

See page 8 for
Heavy Wall Old Work Boxes



**22 CUBIC INCH
SINGLE GANG BOX**

Part Number	Carton Quantity
EZ22SN-HW	100



**35 CUBIC INCH
TWO GANG BOX**

Part Number	Carton Quantity
EZ35DN-HW	48



**53 CUBIC INCH
THREE GANG BOX**

Part Number	Carton Quantity
EZ53TN-HW	24



**64 CUBIC INCH
FOUR GANG BOX**

Part Number	Carton Quantity
EZ64QN-HW	24



**25 CUBIC INCH CEILING BOX
WITH GROUND LUG**
Suitable for fixture support only
50 lbs. maximum

Part Number	Carton Quantity
EZ25CNG-HW	24



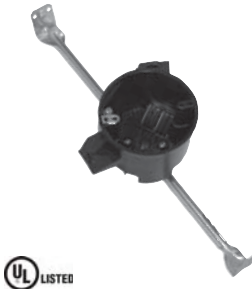
**25 CUBIC INCH
CEILING BOX**
Suitable for fixture support only
50 lbs. maximum

Part Number	Carton Quantity
EZ25CN-HW	24



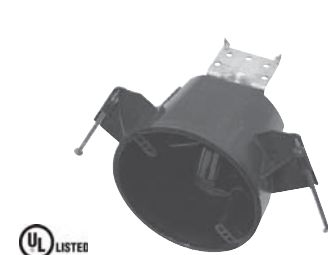
**25 CUBIC INCH
CEILING BOX**
Suitable for fixture support only
50 lbs. maximum

Part Number	Carton Quantity
EZ25CH-HW	20



**25 CUBIC INCH
CEILING BOX WITH
GROUND LUG**
Suitable for fixture support only
50 lbs. maximum

Part Number	Carton Quantity
EZ25CHG-HW	20



**25 CUBIC INCH
CEILING FAN BOX
WITH GROUND LUG**
50 lbs. maximum fixture support
35 lbs maximum fan support

Part Number	Carton Quantity
EZ25CF-HW	24

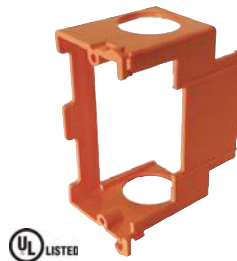
LOW VOLTAGE BRACKETS

- Open back easily accommodates low voltage wiring
- Used with ENT
- Fits standard faceplates
- Product variety good for new & remodel construction



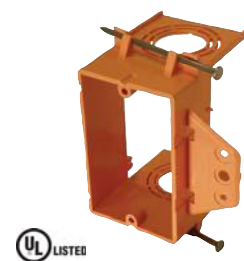
UL LISTED
**Single Gang
 Old Work
 Low Voltage Bracket**

Part Number	Carton Quantity
EZLV1-OW	12



UL LISTED
**Single Gang
 Low Voltage
 Add-On Bracket**

Part Number	Carton Quantity
EZLVSB	24



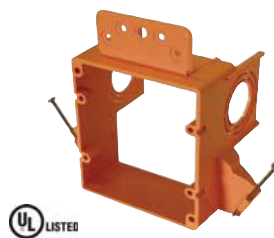
UL LISTED
**Single Gang
 Low Voltage
 Bracket with Nails**

Part Number	Carton Quantity
EZLV1-NWN	24



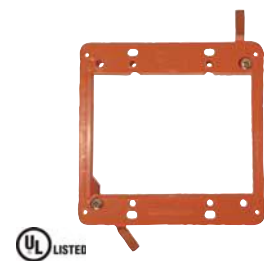
UL LISTED
**Two Gang
 Dual Voltage
 Box/Bracket with Nails**

Part Number	Carton Quantity
EDV2B	16



UL LISTED
**Two Gang
 Low Voltage
 Bracket with Nails**

Part Number	Carton Quantity
EZLV2-NWN	24



UL LISTED
**Two Gang
 Old Work
 Low Voltage Bracket**

Part Number	Carton Quantity
EZLV2-OW	6

Use with multi-gang new work and old work Heavy Wall switch/outlet boxes to install communication device and standard electrical switch or receptacle in a shared wall box.



Low Voltage Divider

Part Number	Carton Quantity
EZLVD-SW	50

HANDY WALL BOXES & COVERS



- Multi-Purpose Electrical Switch/Outlet Box
- Four cover styles available
- Meets NEMA specifications
- UL Listed

12 CUBIC INCH SINGLE GANG BOX

Part Number	Carton Quantity
EZ12SO	50



SINGLE GANG SWITCH COVER

Part Number	Carton Quantity
EZSL-TGL	25



SINGLE GANG DUPLEX COVER

Part Number	Carton Quantity
EZSL-DPLX	25



SINGLE GANG BLANK COVER

Part Number	Carton Quantity
EZSL-BLANK	25



SINGLE GANG GFCI RECEPTACLE COVER

Part Number	Carton Quantity
EZSL-GFCI	25

CEILING FAN BOX



20 CUBIC INCH CEILING FAN BOX

50 lbs. maximum fixture support
35 lbs maximum fan support

Part Number	Carton Quantity
EZ20CZ	18

ENT SWITCH & OUTLET WALL BOXES

- Full product offering of 1 & 2 gang boxes
- Used with ENT snap-in fittings or standard Schedule 40 fittings
- Compliment ENT slab box product offering



**22 CUBIC INCH
SINGLE GANG BOX**

Part Number	Carton Quantity
EN22SB	25



**16 CUBIC INCH
SINGLE GANG BOX**

Part Number	Carton Quantity
EN16SB	25



**38 CUBIC INCH
TWO GANG BOX**

Part Number	Carton Quantity
EN38DB	25



**20 CUBIC INCH
CEILING BOX**

Suitable for fixture support only
50 lbs. maximum

Part Number	Carton Quantity
EN20CB	50



**20 CUBIC INCH
CEILING BOX with BRACKET**

Suitable for fixture support only
50 lbs. maximum

Part Number	Carton Quantity
EN20CBL	50



**20 CUBIC INCH
4" SQUARE BOX**

Part Number	Carton Quantity
EN20DB	100

EXPANDED LINE OF OLD WORK SWITCH & OUTLET BOXES



**55 Cubic Inch
Three Gang
Old Work Box**

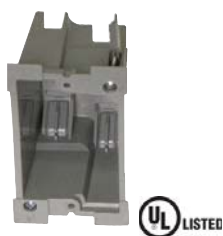
Part Number	Carton Quantity
EZ55TO	6



**68 Cubic Inch
Four Gang
Old Work Box**

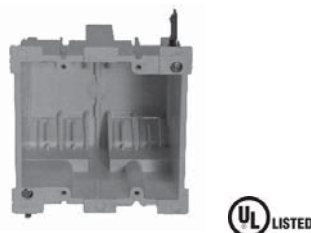
Part Number	Carton Quantity
EZ68QO	6

HEAVY WALL OLD WORK SWITCH & OUTLET BOXES



**18 Cubic Inch Single Gang
Old Work Box
Heavy Wall**

Part Number	Carton Quantity
EZ18SO-HW	36



**34 Cubic Inch Two Gang
Old Work Box
Heavy Wall**

Part Number	Carton Quantity
EZ34DO-HW	18

SWITCH & OUTLET BOX EXTENDER



**Single Gang
Box Extender**

Part Number	Carton Quantity
EZSO-EXT	25

PART NUMBER CROSS REFERENCE

CANTEX	Carlton	Allied Moulded	DESCRIPTION
EZ22SN-HW	BH122A-UPC	1099-N	22 CU IN 1 G NW HARD BOX W/NAILS
EZ35DN-HW	BH235A	2300-N/NK	35 CU IN 2 G NW HARD BOX W/NAILS
EZ53TN-HW	BH353A	3303-N/NK	53 CU IN 3 G NW HARD BOX W/ NAILS
EZ64QN-HW	BH464A	4304-N/NR	64 CU IN 4 G NW HARD BOX W/NAILS AND SUPPORT FLANGE
EZ25CN-HW	BH525A-UPC	9351-N	25 CU IN 3 OR 4" NW HARD ROUND CEILING BOX W/NAILS RATED 50 LB FIXTURE
EZ25CF-HW	BH525L	9351-NFR/NKFR	25 CU IN 3 OR 4" NW HARD ROUND CEILING BOX 35 FAN OR 50 FIX-TURE W/L BRACKET
EZ25CH-HW	BH525H	9350 - 16/16K	25 CU IN 3 OR 4" ROUND NW CEILING BOX W/HANG BAR
EZ25CNG-HW	BH525P		25 CU IN 3 OR 4" NW HARD ROUND CEILING BOX W/GRD LUG 50 FIXTURE
EZ25CHG-HW	BH525HP	9350-16/16GK	25 CU IN 3 OR 4" ROUND NW CEILING BOX W/HANG BAR/GRD LUG
EZ18SO-HW	BH118R	9368-EW	18 CU IN 1 G OW HARD BOX W/MOUNTING EARS & SWING CLAMPS
EZ34DO-HW	BH234R	9329-EW/EWK	34 CU IN 2 G OW HARD BOX W/MOUNTING EARS & SWING CLAMPS
EZLV1-OW	SC100RR		1 G OW LOW VOLTAGE BRACKET
EZLV2-OW	SC200RR		2 G OW LOW VOLTAGE BOX
EZLV2-NWN	SC200A		2 G NW LOW VOLTAGE BRACKET W/NAILS
EZLV1-NWN	SC100A		1 G NW LOW VOLTAGE BRACKET W/NAILS
EZLVSB	SC100SC		1 G NW OR OW ADD ON BRACKET
EZLVD-SW	SCDIV		NW LOW VOLTAGE DIVIDER PLATE
EDV2B	SC200DV		2 G NW DUAL VOLTAGE BRACKET W/NAILS
EZ23SN-RG	FN-23	1099-NV	22.5 CU IN 1 G NW VAPOR TIGHT W/NAILS
EZ36DN-RG	FN-236-V	2302-NKV	36 CU IN 2 NW G VAPOR TIGHT W/NAILS
EZ54TN-RG	FN-354-V	3303-NKV	54 CU IN 3 G NW VAPOR TIGHT W/NAILS
EZ26CN-RG	FN-426-C-V	9351-NKV	26 CU IN NW CEILING BOX VAPOR TIGHT W/NAILS V CLAMPS
EZ21SBZ-ADJ	B121ADJ	SB-1	21 CU IN 1 G NW ADJUSTABLE BOX
EZ34DBZ-ADJ	B234ADJC	SB-2	34 CU IN 2 G NW ADJUSTABLE BOX
EZ12SO	B112HB	9318	12 CU IN 1 GANG PVC HANDY BOX
EZSL-DPLX	HB1DP	9320	HANDY BOX COVER - DUPLEX RECEPTACLE
EZSL-GFCI	HB1GF		HANDY BOX COVER - GFCI
EZSL-TGL	HB1SW	9319	HANDY BOX COVER - TOGGLE SWITCH
EZSL-BLANK	HB1BL	9322	HANDY BOX BLANK COVER
EN20CB	A615DE		20.5 CU IN 4" ENT OCTAGON NW CEILNG BOX 1/2 - 3/4 KO
EN20CBL	A615DL		20.5 CU IN 4" ENT OCTAGON NW CEILNG BOX 1/2 - 3/4 KO WITH BRACKET
EN38DB	A238		38 CU IN 4" SQUARE NW ENT OUTLET BOX W/CONCENTRIC KO'S
EN20DB	A521DE		4" SQUARE NW 20 CU IN OUTLET BOX W/ 1/2 & 3/4 CONCENTRIC KO'S
EN22SB	A122		22 CU IN 1 G NW ENT BOX W/1" CONCENTRIC KO'S
EN16SB	A58381D		16 CU IN 1 G NW ENT BOX W/1/2" CONCENTRIC KO'S
EZ55TO	B355R	9313-EWK	55CU IN OW W/MOUNTING EARS & SWING CLAMPS
EZ68QN	B468R	9314-EWK	68 CU IN OW W/MOUNTING EARS & SWING CLAMPS
EZ20CZ	B720R-SHK	9350-KFR	20 CU IN 3 OR 4" NW CEILING BOX DEEP RATED 35 LB FAN OR 50 LB FIXTURE
EZS0-EXT	B1EXTB		1 G OW BOX EXTENDER



CANTEX INC.
301 Commerce Ste. 2700
Fort Worth, Texas 76102

817-245-7000 Fax: 817-215-7001
www.cantexinc.com